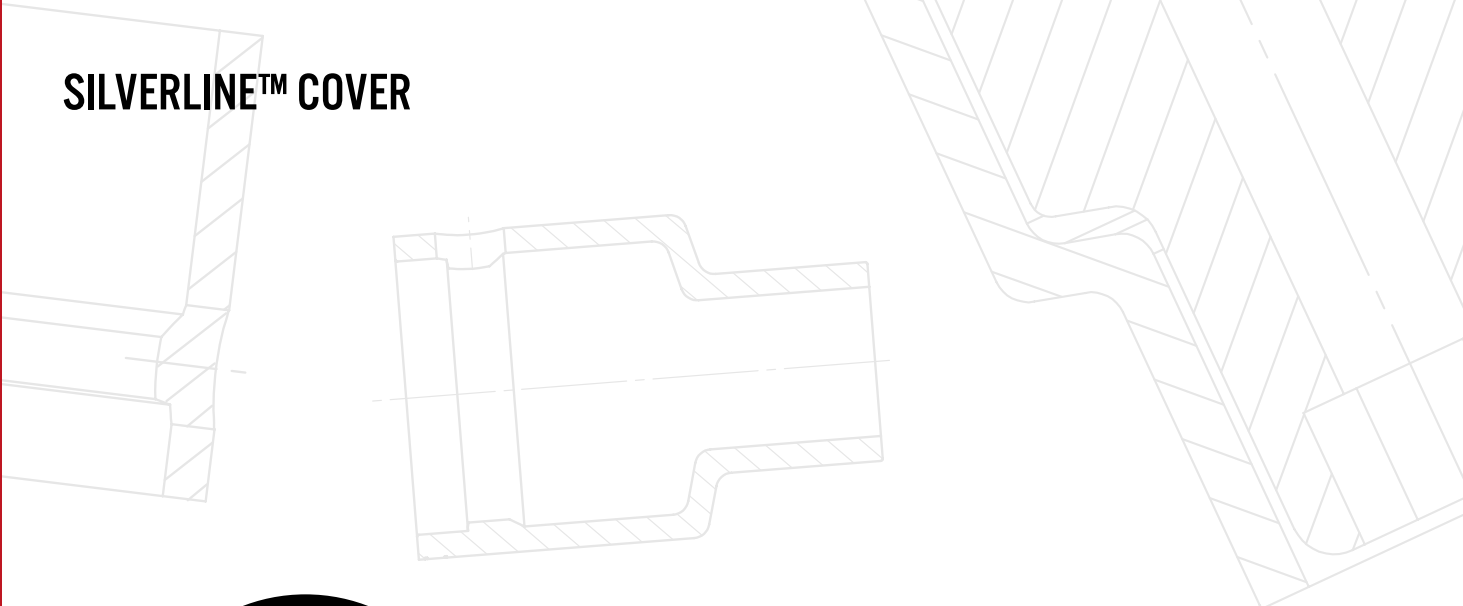


**SILVERLINE™ COVER**



**MADE IN SWEDEN  
SINCE 1951**





# SILVERLINE™ PLASTIC COVER FOR MOMENTO IMPACT SOCKETS

SilverLine™ Cover is made of a durable plastic material that provides a protective barrier between your Momento SilverLine™ socket and the final fine surface on the workpiece. The free spinning design provides high protection for polished, painted and high sensitive surfaces. Avoiding these kind of damages gives high economic efficiency factors for a vehicle production line.

SilverLine™ Cover also has another benefit. It improves safety and avoids injury. Rotating tools can cause accidents to the operator such as wrap of gloves or clothing. The injuries caused of that can be avoided reliably and significantly by the use of our SilverLine™ Cover tools.

If the cover becomes worn, it can easily be replaced with a new one on the same socket. Part numbers for only plastic cover as well as complete protected socket can be found in the product charts in this catalogue.



IMPACT SOCKETS .....	04
MAGNETIC IMPACT SOCKETS .....	05
SURFACE DRIVE .....	06
TORX.....	06
EXTENSIONS .....	07
ADAPTERS .....	07

# 1/4"

# 3/8"

IMPACT SOCKETS .....	08
12-POINT.....	10
MAGNETIC IMPACT SOCKETS .....	11
SURFACE DRIVE.....	12
TORX.....	13
EXTENSIONS.....	14
ADAPTERS .....	14

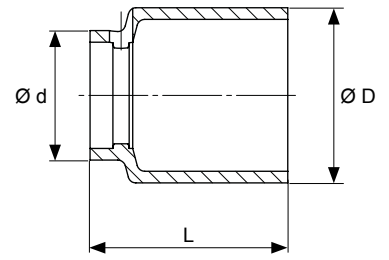
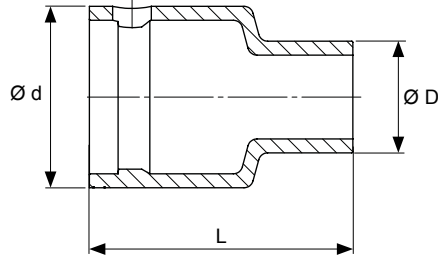
IMPACT SOCKETS .....	15
12-POINT .....	17
MAGNETIC IMPACT SOCKETS .....	19
SURFACE DRIVE.....	20
TORX.....	21
EXTENSIONS .....	21
ADAPTERS .....	22
WHEEL SOCKETS.....	23

# 1/2"

# 3/4"

IMPACT SOCKETS .....	24
12-POINT.....	25
SURFACE DRIVE.....	26
CUSTOMIZED .....	27





SIZE	SOCKET PART NO.	SOCKET WITH COVER	PLASTIC COVER	Ø d	Ø D	L
------	-----------------	-------------------	---------------	-----	-----	---

METRIC

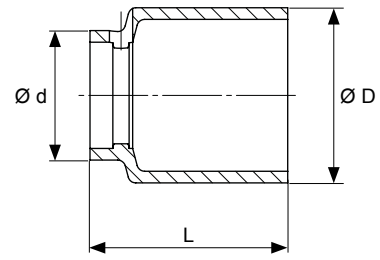
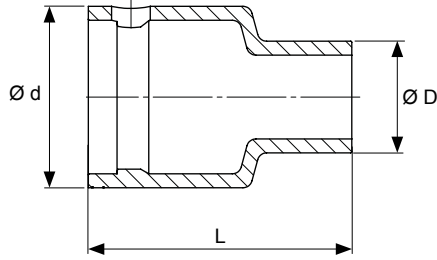
6	0-6	0-6RP	PC0-6	16,7	13,8	25,5
7	0-7	0-7RP	PC0-7	16,7	15,1	25,5
8	0-8	0-8RP	PC0-8	16,7	16,3	25,5
9	0-9	0-9RP	PC0-9	16,7	17,6	25,5
10	0-10	0-10RP	PC0-10	16,7	18,8	25,5
11	0-11	0-11RP	PC0-11	16,7	20,1	25,5
12	0-12	0-12RP	PC0-12	16,7	21,3	25,5
13	0-13	0-13RP	PC0-13	16,7	21,9	25,5
15	0-15	0-15RP	PC0-15	19,7	24,7	30,5
16	0-16	0-16RP	PC0-16	19,7	25,7	30,5
17	0-17	0-17RP	PC0-17	19,6	26,6	30,5
18	0-18	0-18RP	PC0-18	19,6	28,1	30,5
19	0-19=3/4	0-19=3/4RP	PC0-19	19,6	29,6	30,5

METRIC LONG

7	0-7L	0-7LRP	PC0-7L	16,6	15	57,5
8	0-8L	0-8LRP	PC0-8L	16,6	16,2	57,5
10	0-10L	0-10LRP	PC0-10L	16,6	18,7	57,5
12	0-12L	0-12LRP	PC0-12L	16,6	21,2	57,5
13	0-13L	0-13LRP	PC0-13L	16,6	22,5	57,5

INCH

1/4	0-1/4	0-1/4RP	PC0-1/4	16,7	13,8	25,5
5/16	0-5/16	0-5/16RP	PC0-5/16	16,7	16,3	25,5
3/8	0-3/8	0-3/8RP	PC0-3/8	16,7	18,8	25,5
7/16	0-7/16	0-7/16RP	PC0-7/16	16,7	20,1	25,5
1/2	0-1/2	0-1/2RP	PC0-1/2	16,7	21,9	25,5
5/8	0-5/8	0-5/8RP	PC0-5/8	19,7	25,7	30,5



SIZE	SOCKET PART NO.	SOCKET WITH COVER	PLASTIC COVER	$\varnothing d$	$\varnothing D$	L
------	-----------------	-------------------	---------------	-----------------	-----------------	---

METRIC

6	0-6M	0-6MRP	PC0-6M	16,7	13,8	25,5
7	0-7M	0-7MRP	PC0-7M	16,7	15,1	25,5
8	0-8M	0-8MRP	PC0-8M	16,7	16,3	25,5
9	0-9M	0-9MRP	PC0-9M	16,7	17,6	25,5
10	0-10M	0-10MRP	PC0-10M	16,7	18,8	25,5
11	0-11M	0-11MRP	PC0-11M	16,7	20,1	25,5
12	0-12M	0-12MRP	PC0-12M	16,7	21,3	25,5
13	0-13M	0-13MRP	PC0-13M	16,7	21,9	25,5

METRIC LONG

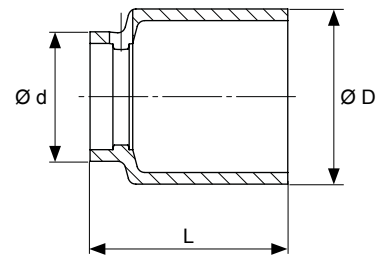
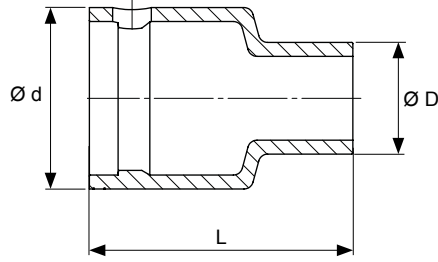
8ML	0-8ML	0-8MLRP	PC0-8ML	16,6	16,2	57,5
10ML	0-10ML	0-10MLRP	PC0-10ML	16,6	18,7	57,5
13ML	0-13ML	0-13MLRP	PC0-13ML	16,6	22,5	57,5

INCH

1/4	0-1/4M	0-1/4MRP	PC0-1/4M	16,7	13,8	25,5
5/16	0-5/16M	0-5/16MRP	PC0-5/16M	16,7	16,3	25,5
3/8	0-3/8M	0-3/8MRP	PC0-3/8M	16,7	18,8	25,5
7/16	0-7/16M	0-7/16MRP	PC0-7/16M	16,7	20,1	25,5
1/2	0-1/2M	0-1/2MRP	PC0-1/2M	16,7	21,9	25,5



1/4"

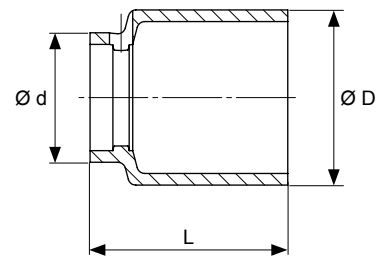
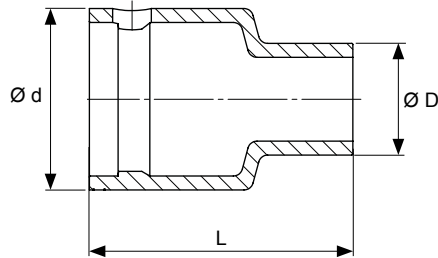


SIZE	SOCKET PART NO.	SOCKET WITH COVER	PLASTIC COVER	Ø d	Ø D	L
------	-----------------	-------------------	---------------	-----	-----	---

METRIC

7	0-SF7	0-SF7RP	PC0-SF7	16,7	15,1	25,5
8	0-SF8	0-SF8RP	PC0-SF8	16,7	16,3	25,5
10	0-SF10	0-SF10RP	PC0-SF10	16,7	18,8	25,5
13	0-SF13	0-SF13RP	PC0-SF13	16,7	21,9	25,5

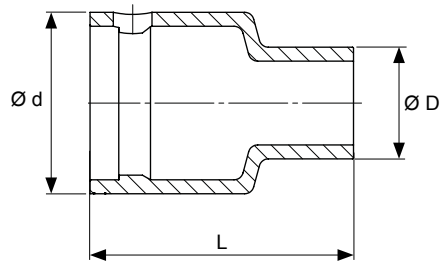
TORX KRAFTHYLSOR / TORX IMPACT SOCKETS / TORX KRAFTSTECKSCHLÜSSEL-EINSÄTZE



SIZE	SOCKET PART NO.	SOCKET WITH COVER	PLASTIC COVER	Ø d	Ø D	L
------	-----------------	-------------------	---------------	-----	-----	---

METRIC

E5	0-E5	0-E5RP	PC0-E5	16,7	11,4	25,5
E6	0-E6	0-E6RP	PC0-E6	16,7	12,4	25,5
E7	0-E7	0-E7RP	PC0-E7	16,7	12,7	25,5
E8	0-E8	0-E8RP	PC0-E8	16,7	13,4	25,5
E10	0-E10	0-E10RP	PC0-E10	16,7	16,7	25,5

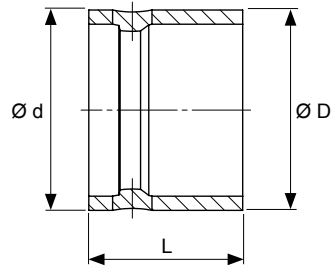


SIZE	SOCKET PART NO.	SOCKET WITH COVER	PLASTIC COVER	Ø d	Ø D	L
------	-----------------	-------------------	---------------	-----	-----	---

METRIC

1/4	EB00-2	EB00-2RP	PCEB00-2	17,2	12,4	43
1/4	EB00-3	EB00-3RP	PCEB00-3	17,2	12,4	68
1/4	EB00-4	EB00-4RP	PCEB00-4	17,2	12,4	94
1/4	EB00-5	EB00-5RP	PCEB00-5	17,2	12,4	119
1/4	EB00-6	EB00-6RP	PCEB00-6	17,2	12,4	145

ADAPTRAR / ADAPTERS / ADAPTER



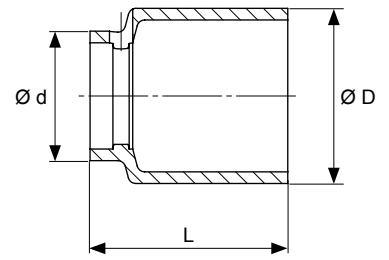
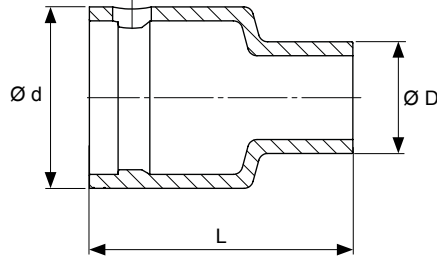
SIZE	SOCKET PART NO.	SOCKET WITH COVER	PLASTIC COVER	Ø d	Ø D	L
------	-----------------	-------------------	---------------	-----	-----	---

METRIC

1/4-3/8	PA01	PA01RP	PCPA01	16	16	20
---------	------	--------	--------	----	----	----



3/8"



SIZE	SOCKET PART NO.	SOCKET WITH COVER	PLASTIC COVER	Ø d	Ø D	L
------	-----------------	-------------------	---------------	-----	-----	---

METRIC

6	1-6	1-6RP	PC1-6	23,4	14,4	34
7	1-7	1-7RP	PC1-7	23,4	16,4	34
8	1-8	1-8RP	PC1-8	23,4	17,9	34
9	1-9	1-9RP	PC1-9	23,4	19,2	34
10	1-10	1-10RP	PC1-10	23,4	20,4	34
11	1-11	1-11RP	PC1-11	23,4	21,6	34
12	1-12	1-12RP	PC1-12	23,4	22,9	34
13	1-13	1-13RP	PC1-13	26,4	24,2	34
14	1-14	1-14RP	PC1-14	26,4	25,4	34
15	1-15	1-15RP	PC1-15	26,4	26,9	34
16	1-16	1-16RP	PC1-16	26,4	28,2	34
17	1-17	1-17RP	PC1-17	26,4	29,4	34
18	1-18	1-18RP	PC1-18	26,4	30,4	34
19	1-19=3/4	1-19=3/4RP	PC1-19	26,4	31,9	34
20	1-20	1-20RP	PC1-20	26,4	32,9	34
21	1-21	1-21RP	PC1-21	31,1	33,9	34
22	1-22	1-22RP	PC1-22	31,2	35,4	34
24	1-24	1-24RP	PC1-24	31,1	37,9	34
27	1-27=1 1/16	1-27=1 1/16RP	PC1-27	31,2	41,4	34,5
30	1-30=1 3/16	1-30=1 3/16RP	PC1-30	31,2	44,4	34,5

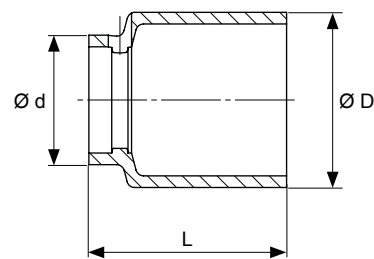
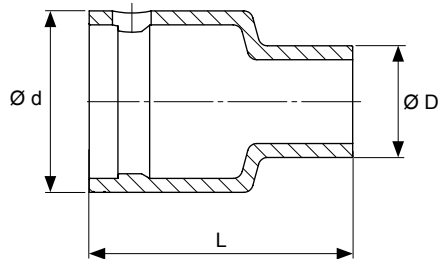
METRIC LONG

6	1-6L	1-6LRP	PC1-6L	23,2	14,2	57,5
7	1-7L	1-7LRP	PC1-7L	23,2	16,2	57,5
8	1-8L	1-8LRP	PC1-8L	23,2	17,7	57,5
9	1-9L	1-9LRP	PC1-9L	23,2	19	57,5
10	1-10L	1-10LRP	PC1-10L	23,4	20,4	57,5
11	1-11L	1-11LRP	PC1-11L	23,2	21,4	57,5
12	1-12L	1-12LRP	PC1-12L	23,2	22,7	57,5
13	1-13L	1-13LRP	PC1-13L	26,2	24	57,5
14	1-14L	1-14LRP	PC1-14L	26,2	25,8	57,5
15	1-15L	1-15LRP	PC1-15L	26,2	27,3	57,5
16	1-16L	1-16LRP	PC1-16L	26,2	28,6	57,5
17	1-17L	1-17LRP	PC1-17L	26,2	29,8	57,5
18	1-18L	1-18LRP	PC1-18L	26,2	30,8	57,5
19	1-19=3/4L	1-19=3/4LRP	PC1-19L	26,2	32,3	57,5
20	1-20L	1-20LRP	PC1-20L	26,2	32,7	57,5
21	1-21L	1-21LRP	PC1-21L	31,2	33,9	57,5
22	1-22L	1-22LRP	PC1-22L	31,2	35,4	57,5
24	1-24L	1-24LRP	PC1-24L	31,2	37,9	57,5
27	1-27=1 1/16L	1-27=1 1/16LRP	PC1-27L	31,2	41,4	57,5
30	1-30=1 3/16L	1-30=1 3/16LRP	PC1-30L	31,2	44,4	57,5





3/8"



SIZE	SOCKET PART NO.	SOCKET WITH COVER	PLASTIC COVER	Ø d	Ø D	L
------	-----------------	-------------------	---------------	-----	-----	---

INCH

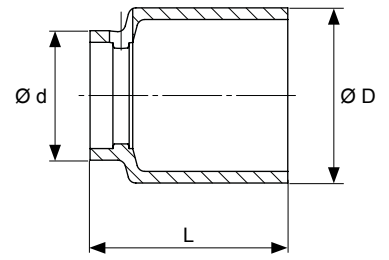
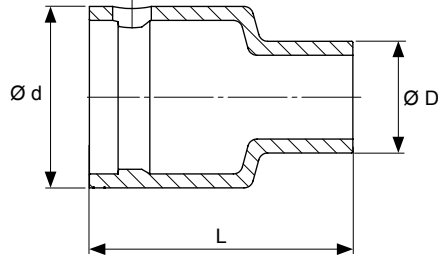
1/4	1-1/4	1-1/4RP	PC1-1/4	23,4	14,4	34
5/16	1-5/16	1-5/16RP	PC1-5/16	23,4	17,9	34
3/8	1-3/8	1-3/8RP	PC1-3/8	23,4	20,4	34
7/16	1-7/16	1-7/16RP	PC1-7/16	23,4	21,6	34
1/2	1-1/2	1-1/2RP	PC1-1/2	26,4	24,2	34
9/16	1-9/16	1-9/16RP	PC1-9/16	26,4	25,4	34
5/8	1-5/8	1-5/8RP	PC1-5/8	26,4	28,2	34
11/16	1-11/16	1-11/16RP	PC1-11/16	26,4	29,4	34
3/4	1-19=3/4	1-19=3/4RP	PC1-19	26,4	31,9	34
13/16	1-13/16	1-13/16RP	PC1-13/16	31,1	33,9	34
7/8	1-7/8	1-7/8RP	PC1-7/8	31,2	35,4	34

INCH LONG

1/4	1-1/4L	1-1/4LRP	PC1-1/4L	23,2	14,2	57,5
5/16	1-5/16L	1-5/16LRP	PC1-5/16L	23,2	17,7	57,5
3/8	1-3/8L	1-3/8LRP	PC1-3/8L	23,4	20,4	57,5
7/16	1-7/16L	1-7/16LRP	PC1-7/16L	23,2	21,4	57,5
1/2	1-1/2L	1-1/2LRP	PC1-1/2L	26,2	24	57,5
9/16	1-9/16L	1-9/16LRP	PC1-9/16L	26,2	25,8	57,5
5/8	1-5/8L	1-5/8LRP	PC1-5/8L	26,2	28,6	57,5
11/16	1-11/16L	1-11/16LRP	PC1-11/16L	26,2	29,8	57,5
3/4	1-19=3/4L	1-19=3/4LRP	PC1-19L	26,2	32,3	57,5



3/8"



SIZE	SOCKET PART NO.	SOCKET WITH COVER	PLASTIC COVER	Ø d	Ø D	L
------	-----------------	-------------------	---------------	-----	-----	---

METRIC

8	1-D6K8	1-D6K8RP	PC1-D6K8	23,4	17,9	34
10	1-D6K10	1-D6K10RP	PC1-D6K10	23,4	20,4	34
11	1-D6K11	1-D6K11RP	PC1-D6K11	23,4	21,6	34
12	1-D6K12	1-D6K12RP	PC1-D6K12	23,4	22,9	34
13	1-D6K13	1-D6K13RP	PC1-D6K13	26,4	24,2	34
14	1-D6K14	1-D6K14RP	PC1-D6K14	26,4	25,4	34
16	1-D6K16	1-D6K16RP	PC1-D6K16	26,4	28,2	34
17	1-D6K17	1-D6K17RP	PC1-D6K17	26,4	29,4	34
19	1-D6K19=3/4	1-D6K19=3/4RP	PC1-D6K19	26,4	31,9	34

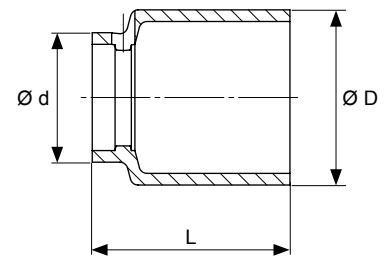
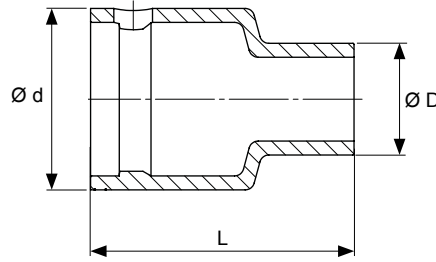
METRIC LONG

8	1-D6K10L	1-D6K10LRP	PC1-D6K10L	23,4	20,4	57,5
10	1-D6K13L	1-D6K13LRP	PC1-D6K13L	26,2	24	57,5
11	1-D6K16L	1-D6K16LRP	PC1-D6K16L	26,2	28,6	57,5
12	1-D6K17L	1-D6K17LRP	PC1-D6K17L	26,2	29,8	57,5
13	1-D6K19=3/4L	1-D6K19=3/4LRP	PC1-D6K19L	26,2	32,3	57,5





3/8"



SIZE	SOCKET PART NO.	SOCKET WITH COVER	PLASTIC COVER	Ø d	Ø D	L
------	-----------------	-------------------	---------------	-----	-----	---

METRIC

6	1-6M	1-6MRP	PC1-6M	23,4	14,4	34
7	1-7M	1-7MRP	PC1-7M	23,4	16,4	34
8	1-8M	1-8MRP	PC1-8M	23,4	17,9	34
9	1-9M	1-9MRP	PC1-9M	23,4	19,2	34
10	1-10M	1-10MRP	PC1-10M	23,4	20,4	34
11	1-11M	1-11MRP	PC1-11M	23,4	21,6	34
12	1-12M	1-12MRP	PC1-12M	23,4	22,9	34
13	1-13M	1-13MRP	PC1-13M	26,4	24,2	34
14	1-14M	1-14MRP	PC1-14M	26,4	25,4	34
15	1-15M	1-15MRP	PC1-15M	26,4	26,9	34
16	1-16M	1-16MRP	PC1-16M	26,4	28,2	34
17	1-17M	1-17MRP	PC1-17M	26,4	29,4	34
18	1-18M	1-18MRP	PC1-18M	26,4	30,4	34
19	1-19=3/4M	1-19=3/4MRP	PC1-19M	26,4	31,9	34

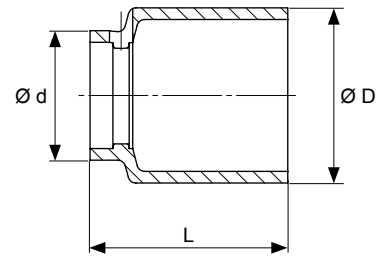
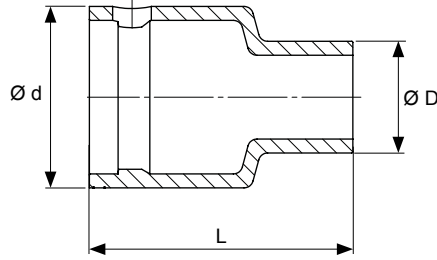
METRIC LONG

10	1-10ML	1-10MLRP	PC1-10ML	23,4	20,4	57,5
12	1-12ML	1-12MLRP	PC1-12ML	23,2	22,7	57,5
13	1-13ML	1-13MLRP	PC1-13ML	26,2	24	57,5
15	1-15ML	1-15MLRP	PC1-15ML	26,2	27,3	57,5
19	1-19=3/4ML	1-19=3/4MLRP	PC1-19ML	26,2	32,3	57,5

INCH

1/4	1-1/4M	1-1/4MRP	PC1-1/4M	23,4	14,4	34
5/16	1-5/16M	1-5/16MRP	PC1-5/16M	23,4	17,9	34
3/8	1-3/8M	1-3/8MRP	PC1-3/8M	23,4	20,4	34
7/16	1-7/16M	1-7/16MRP	PC1-7/16M	23,4	21,6	34
1/2	1-1/2M	1-1/2MRP	PC1-1/2M	26,4	24,2	34
9/16	1-9/16M	1-9/16MRP	PC1-9/16M	26,4	25,4	34
3/4	1-19=3/4M	1-19=3/4MRP	PC1-19M	26,4	31,9	34

3/8"



SIZE	SOCKET PART NO.	SOCKET WITH COVER	PLASTIC COVER	Ø d	Ø D	L
------	-----------------	-------------------	---------------	-----	-----	---

METRIC

7	1-SF7	1-SF7RP	PC1-SF7	23,4	16,4	34
8	1-SF8	1-SF8RP	PC1-SF8	23,4	17,9	34
10	1-SF10	1-SF10RP	PC1-SF10	23,4	20,4	34
11	1-SF11	1-SF11RP	PC1-SF11	23,4	21,6	34
12	1-SF12	1-SF12RP	PC1-SF12	23,4	22,9	34
13	1-SF13	1-SF13RP	PC1-SF13	26,4	24,2	34
14	1-SF14	1-SF14RP	PC1-SF14	26,4	25,4	34
15	1-SF15	1-SF15RP	PC1-SF15	26,4	26,9	34
16	1-SF16	1-SF16RP	PC1-SF16	26,4	28,2	34
17	1-SF17	1-SF17RP	PC1-SF17	26,4	29,4	34
18	1-SF18	1-SF18RP	PC1-SF18	26,4	30,4	34
19	1-SF19=3/4	1-SF19=3/4RP	PC1-SF19	26,4	31,9	34
21	1-SF21	1-SF21RP	PC1-SF21	31,1	33,9	34
22	1-SF22	1-SF22RP	PC1-SF22	31,2	35,4	34
24	1-SF24	1-SF24RP	PC1-SF24	31,1	37,9	34

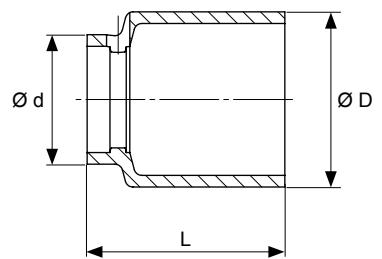
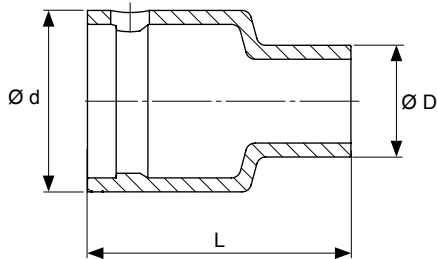
METRIC LONG

8	1-SF8L	1-SF8LRP	PC1-SF8L	23,2	17,7	57,5
10	1-SF10L	1-SF10LRP	PC1-SF10L	23,4	20,4	57,5
11	1-SF11L	1-SF11LRP	PC1-SF11L	23,2	21,4	57,5
12	1-SF12L	1-SF12LRP	PC1-SF12L	23,2	22,7	57,5
13	1-SF13L	1-SF13LRP	PC1-SF13L	26,2	24	57,5
14	1-SF14L	1-SF14LRP	PC1-SF14L	26,2	25,8	57,5
15	1-SF15L	1-SF15LRP	PC1-SF15L	26,2	27,3	57,5
16	1-SF16L	1-SF16LRP	PC1-SF16L	26,2	28,6	57,5
17	1-SF17L	1-SF17LRP	PC1-SF17L	26,2	29,8	57,5
18	1-SF18L	1-SF18LRP	PC1-SF18L	26,2	30,8	57,5
19	1-SF19=3/4L	1-SF19=3/4LRP	PC1-SF19L	26,2	32,3	57,5





3/8"



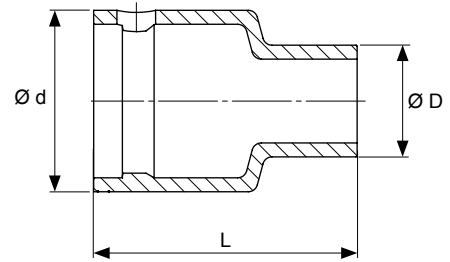
SIZE	SOCKET PART NO.	SOCKET WITH COVER	PLASTIC COVER	$\varnothing d$	$\varnothing D$	L
------	-----------------	-------------------	---------------	-----------------	-----------------	---

METRIC

E6	1-E6	1-E6RP	PC1-E6	23,4	15,1	34,5
E7	1-E7	1-E7RP	PC1-E7	23,4	15,6	34,5
E8	1-E8	1-E8RP	PC1-E8	23,4	16,1	34,5
E10	1-E10	1-E10RP	PC1-E10	23,4	16,4	34,5
E12	1-E12	1-E12RP	PC1-E12	23,4	18,6	34,5
E14	1-E14	1-E14RP	PC1-E14	23,4	21,6	34,5
E16	1-E16	1-E16RP	PC1-E16	23,4	22,6	34,5



3/8"

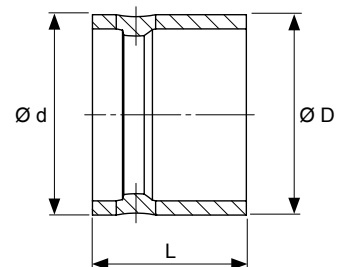


SIZE	SOCKET PART NO.	SOCKET WITH COVER	PLASTIC COVER	Ø d	Ø D	L
------	-----------------	-------------------	---------------	-----	-----	---

METRIC

3/8	EB11-1 1/4	EB11-1 1/4RP	PCEB11-1 1/4	25,4	25,4	20
3/8	EB11-2	EB11-2RP	PCEB11-2	25,4	16,6	39,5
3/8	EB11-3	EB11-3RP	PCEB11-3	25,4	16,6	64,5
3/8	EB11-4	EB11-4RP	PCEB11-4	25,4	16,6	90,5
3/8	EB11-5	EB11-5RP	PCEB11-5	25,4	16,6	115,5
3/8	EB11-6	EB11-6RP	PCEB11-6	25,4	16,6	140,5
3/8	EB11-7	EB11-7RP	PCEB11-7	25,4	16,6	166
3/8	EB11-8	EB11-8RP	PCEB11-8	25,4	16,6	191
3/8	EB11-9	EB11-9RP	PCEB11-9	25,4	16,6	217
3/8	EB11-10	EB11-10RP	PCEB11-10	25,4	16,6	242

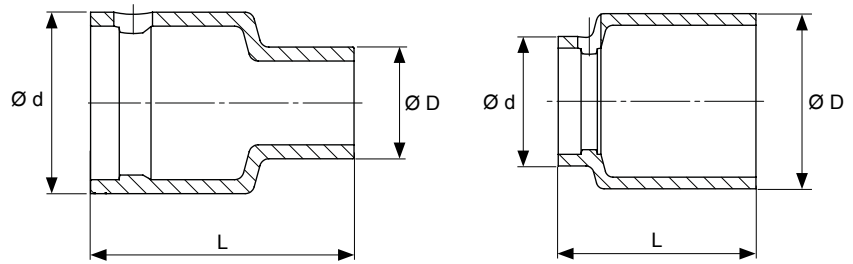
ADAPTRAR / ADAPTERS / ADAPTER



SIZE	SOCKET PART NO.	SOCKET WITH COVER	PLASTIC COVER	Ø d	Ø D	L
------	-----------------	-------------------	---------------	-----	-----	---

METRIC

3/8-1/4	PA10	PA10RP	PCPA10	25,4	25,4	19,5
3/8-1/2	PA14	PA14RP	PCPA14	25,4	25,4	19,5



SIZE	SOCKET PART NO.	SOCKET WITH COVER	PLASTIC COVER	Ø d	Ø D	L
------	-----------------	-------------------	---------------	-----	-----	---

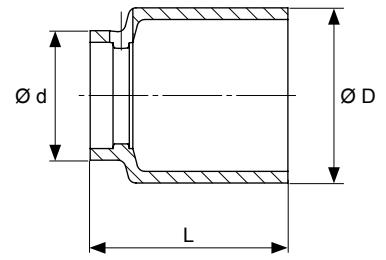
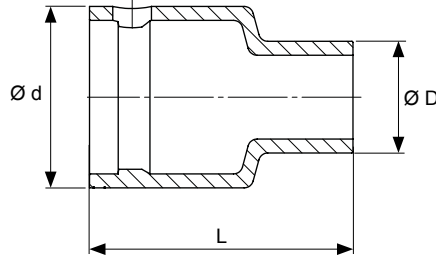
METRIC

8	4-8	4-8RP	PC4-8	30	19,3	38,5
10	4-10	4-10RP	PC4-10	30	22	38,5
11	4-11	4-11RP	PC4-11	30	23,5	38,5
12	4-12	4-12RP	PC4-12	30	24,7	38,5
13	4-13	4-13RP	PC4-13	30	26	38,5
14	4-14	4-14RP	PC4-14	30	27,5	38,5
15	4-15	4-15RP	PC4-15	35	28,5	38,5
16	4-16	4-16RP	PC4-16	35	29,5	38,5
17	4-17	4-17RP	PC4-17	35	31	38,5
18	4-18	4-18RP	PC4-18	35	32,5	38,5
19	4-19=3/4	4-19=3/4RP	PC4-19	35	34	38,5
21	4-21	4-21RP	PC4-21	35	36	38,5
22	4-22	4-22RP	PC4-22	34,2	36,9	38,5
24	4-24	4-24RP	PC4-24	35	40	40,5
27	4-27=1 1/16	4-27=1 1/16RP	PC4-27	34,4	42,9	45,5
30	4-30=1 3/16	4-30=1 3/16RP	PC4-30	34,4	46,9	50,5
32	4-32	4-32RP	PC4-32	44,4	49,4	50,5
33	4-33	4-33RP	PC4-33	44,4	50,9	50,5
34	4-34	4-34RP	PC4-34	44,4	51,4	50,5
36	4-36	4-36RP	PC4-36	44,4	54,4	56,5
41	4-41	4-41RP	PC4-41	44,4	61,4	65,5
46	4-46=1 13/16	4-46=1 13/16RP	PC4-46	44,4	67,4	65,5

METRIC LONG

10	4-10L	4-10LRP		30	22	82,5
11	4-11L	4-11LRP	PC4-11L	30	23,5	82,5
12	4-12L	4-12LRP	PC4-12L	30	24,7	82,5
13	4-13L	4-13LRP	PC4-13L	29,2	25,2	82,5
14	4-14L	4-14LRP	PC4-14L	29,2	26,7	82,5
15	4-15L	4-15LRP	PC4-15L	35	28,5	82,5
16	4-16L	4-16LRP	PC4-16L	34,2	28,7	82,5
17	4-17L	4-17LRP	PC4-17L	35	31	82,5
18	4-18L	4-18LRP	PC4-18L	34,2	31,7	82,5
19	4-19=3/4L	4-19=3/4LRP	PC4-19L	34,2	33,2	82,5
21	4-21L	4-21LRP	PC4-21L	34,4	35,4	82,5
22	4-22L	4-22LRP	PC4-22L	34,4	36,9	82,5
24	4-24L	4-24LRP	PC4-24L	34,4	39,4	82,5
27	4-27=1 1/16L	4-27=1 1/16LRP	PC4-27L	34,4	42,9	82,5
30	4-30=1 3/16L	4-30=1 3/16LRP	PC4-30L	34,4	46,9	82,5
32	4-32L	4-32LRP	PC4-32L	44,4	49,4	82,5
33	4-33L	4-33LRP	PC4-33L	44,4	50,9	82,5
34	4-34L	4-34LRP	PC4-34L	44,4	51,4	82,5
36	4-36L	4-36LRP	PC4-36L	44,4	54,4	82,5
41	4-41L	4-41LRP	PC4-41L	44,4	61,4	82,5
46	4-46=1 13/16L	4-46=1 13/16LRP	PC4-46L	44,4	67,4	82,5





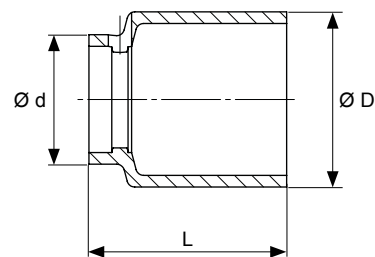
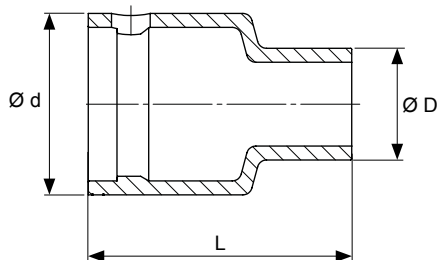
SIZE	SOCKET PART NO.	SOCKET WITH COVER	PLASTIC COVER	Ø d	Ø D	L
------	-----------------	-------------------	---------------	-----	-----	---

INCH

5/16	4-5/16	4-5/16RP	PC4-5/16	30	19,3	38,5
3/8	4-3/8	4-3/8RP	PC4-3/8	30	22	38,5
7/16	4-7/16	4-7/16RP	PC4-7/16	30	23,5	38,5
1/2	4-1/2	4-1/2RP	PC4-1/2	30	26	38,5
9/16	4-9/16	4-9/16RP	PC4-9/16	30	27,5	38,5
5/8	4-5/8	4-5/8RP	PC4-5/8	35	29,5	38,5
11/16	4-11/16	4-11/16RP	PC4-11/16	35	31	38,5
3/4	4-19=3/4	4-19=3/4RP	PC4-19	35	34	38,5
13/16	4-13/16	4-13/16RP	PC4-13/16	35	36	38,5
7/8	4-7/8	4-7/8RP	PC4-7/8	34,2	36,9	38,5
15/16	4-15/16	4-15/16RP	PC4-15/16	35	40	40,5
1 1/16	4-27=1 1/16	4-27=1 1/16RP	PC4-27	34,4	42,9	45,5
1 3/16	4-30=1 3/16	4-30=1 3/16RP	PC4-30	34,4	46,9	50,5
1 1/4	4-1 1/4	4-1 1/4RP	PC4-1 1/4	44,4	49,4	50,5
1 5/16	4-1 5/16	4-1 5/16RP	PC4-1 5/16	44,4	50,9	50,5
1 5/8	4-1 5/8	4-1 5/8RP	PC4-1 5/8	44,4	61,4	82,5
1 13/16	4-46=1 13/16	4-46=1 13/16RP	PC4-46	44,4	67,4	65,5

INCH LONG

3/8	4-3/8L	4-3/8LRP	PC4-3/8L	30	22	38,5
7/16	4-7/16L	4-7/16LRP	PC4-7/16L	30	23,5	38,5
1/2	4-1/2L	4-1/2LRP	PC4-1/2L	30	26	38,5
9/16	4-9/16L	4-9/16LRP	PC4-9/16L	30	27,5	38,5
5/8	4-5/8L	4-5/8LRP	PC4-5/8L	35	29,5	38,5
11/16	4-11/16L	4-11/16LRP	PC4-11/16L	35	31	38,5
3/4	4-19=3/4L	4-19=3/4LRP	PC4-19L	35	34	38,5
13/16	4-13/16L	4-13/16LRP	PC4-13/16L	35	36	38,5
7/8	4-7/8L	4-7/8LRP	PC4-7/8L	34,4	36,9	82,5
15/16	4-15/16L	4-15/16LRP	PC4-15/16L	35	40	40,5
1 1/16	4-27=1 1/16L	4-27=1 1/16LRP	PC4-27L	34,4	42,9	45,5
1 3/16	4-30=1 3/16L	4-30=1 3/16LRP	PC4-30L	34,4	46,9	50,5
1 1/4	4-1 1/4L	4-1 1/4LRP	PC4-32L	44,4	49,4	82,5
5/16	4-1 5/16L	4-1 5/16LRP	PC4-1 5/16L	44,4	50,9	50,5
1 13/16	4-46=1 13/16L	4-46=1 13/16LRP	PC4-46L	44,4	67,4	65,5



1/2"

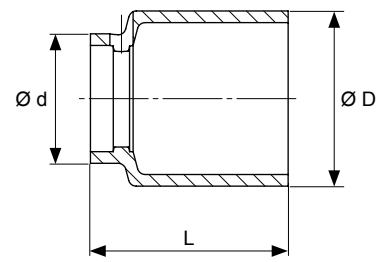
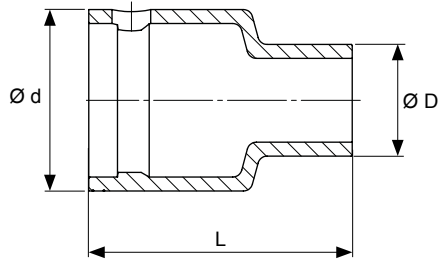
SIZE	SOCKET PART NO.	SOCKET WITH COVER	PLASTIC COVER	Ø d	Ø D	L
------	-----------------	-------------------	---------------	-----	-----	---

METRIC

8	4-D6K8	4-D6K8RP	PC4-D6K8	30	19,3	38,5
10	4-D6K10	4-D6K10RP	PC4-D6K10	30	22	38,5
11	4-D6K11	4-D6K11RP	PC4-D6K11	30	23,5	38,5
12	4-D6K12	4-D6K12RP	PC4-D6K12	30	24,7	38,5
13	4-D6K13	4-D6K13RP	PC4-D6K13	30	26	38,5
14	4-D6K14	4-D6K14RP	PC4-D6K14	30	27,5	38,5
15	4-D6K15	4-D6K15RP	PC4-D6K15	35	28,5	38,5
16	4-D6K16	4-D6K16RP	PC4-D6K16	35	29,5	38,5
17	4-D6K17	4-D6K17RP	PC4-D6K17	35	31	38,5
18	4-D6K18	4-D6K18RP	PC4-D6K18	35	32,5	38,5
19	4-D6K19=3/4	4-D6K19=3/4RP	PC4-D6K19	35	34	38,5
21	4-D6K21	4-D6K21RP	PC4-D6K21	35	36	38,5
22	4-D6K22	4-D6K22RP	PC4-D6K22	34,2	36,9	38,5
24	4-D6K24	4-D6K24RP	PC4-D6K24	35	40	40,5
27	4-D6K27=1 1/16	4-D6K27=1 1/16RP	PC4-D6K27	34,4	42,9	45,5
30	4-D6K30=1 3/16	4-D6K30=1 3/16RP	PC4-D6K30	34,4	46,9	50,5
32	4-D6K32	4-D6K32RP	PC4-D6K32	44,4	49,4	50,5
33	4-D6K33	4-D6K33RP	PC4-D6K33	44,4	50,9	50,5
34	4-D6K34	4-D6K34RP	PC4-D6K34	44,4	51,4	50,5
36	4-D6K36	4-D6K36RP	PC4-D6K36	44,4	54,4	56,5
41	4-D6K41	4-D6K41RP	PC4-D6K41	44,4	61,4	65,5
46	4-D6K46=1 13/16	4-D6K46=1 13/16RP	PC4-D6K46	44,4	67,4	65,5

METRIC LONG

10	4-D6K10L	4-D6K10LRP	PC4-D6K10L	30	22	82,5
11	4-D6K11L	4-D6K11LRP	PC4-D6K11L	30	23,5	82,5
12	4-D6K12L	4-D6K12LRP	PC4-D6K12L	30	24,7	82,5
13	4-D6K13L	4-D6K13LRP	PC4-D6K13L	29,2	25,2	82,5
14	4-D6K14L	4-D6K14LRP	PC4-D6K14L	29,2	26,7	82,5
15	4-D6K15L	4-D6K15LRP	PC4-D6K15L	35	28,5	82,5
16	4-D6K16L	4-D6K16LRP	PC4-D6K16L	34,2	28,7	82,5
17	4-D6K17L	4-D6K17LRP	PC4-D6K17L	35	31	82,5
18	4-D6K18L	4-D6K18LRP	PC4-D6K18L	34,2	31,7	82,5
19	4-D6K19=3/4L	4-D6K19=3/4LRP	PC4-D6K19L	34,2	33,2	82,5
21	4-D6K21L	4-D6K21LRP	PC4-D6K21L	34,4	35,4	82,5
22	4-D6K22L	4-D6K22LRP	PC4-D6K22L	34,4	36,9	82,5
24	4-D6K24L	4-D6K24LRP	PC4-D6K24L	34,4	39,4	82,5
27	4-D6K27=1 1/16L	4-D6K27=1 1/16LRP	PC4-D6K27L	34,4	42,9	82,5
30	4-D6K30=1 3/16L	4-D6K30=1 3/16LRP	PC4-D6K30L	34,4	46,9	82,5
32	4-D6K32L	4-D6K32LRP	PC4-D6K32L	44,4	49,4	82,5
34	4-D6K34L	4-D6K34LRP	PC4-D6K34L	44,4	51,4	82,5
36	4-D6K36L	4-D6K36LRP	PC4-D6K36L	44,4	54,4	82,5



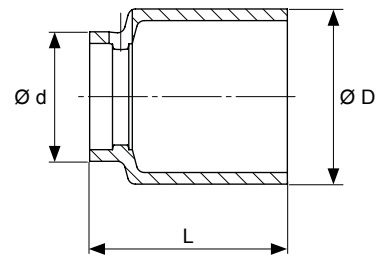
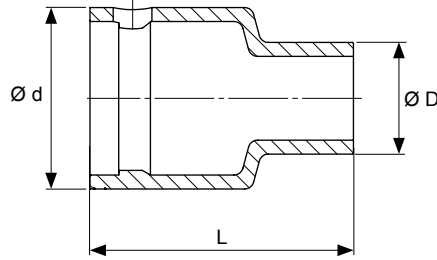
SIZE	SOCKET PART NO.	SOCKET WITH COVER	PLASTIC COVER	Ø d	Ø D	L
------	-----------------	-------------------	---------------	-----	-----	---

INCH

5/16	4-D6K5/16	4-D6K5/16RP	PC4-D6K5/16	30	19,3	38,5
3/8	4-D6K3/8	4-D6K3/8RP	PC4-D6K3/8	30	22	38,5
7/16	4-D6K7/16	4-D6K7/16RP	PC4-D6K7/16	30	23,5	38,5
1/2	4-D6K1/2	4-D6K1/2RP	PC4-D6K1/2	30	26	38,5
9/16	4-D6K9/16	4-D6K9/16RP	PC4-D6K9/16	30	27,5	38,5
5/8	4-D6K5/8	4-D6K5/8RP	PC4-D6K5/8	35	29,5	38,5
11/16	4-D6K11/16	4-D6K11/16RP	PC4-D6K11/16	35	31	38,5
3/4	4-D6K19=3/4	4-D6K19=3/4RP	PC4-D6K19	35	34	38,5
13/16	4-D6K13/16	4-D6K13/16RP	PC4-D6K13/16	35	36	38,5
7/8	4-D6K7/8	4-D6K7/8RP	PC4-D6K7/8	34,2	36,9	38,5
15/16	4-D6K15/16	4-D6K15/16RP	PC4-D6K15/16	35	40	40,5
1 1/16	4-D6K27=1 1/16	4-D6K27=1 1/16RP	PC4-D6K27	34,4	42,9	45,5
1 3/16	4-D6K30=1 3/16	4-D6K30=1 3/16RP	PC4-D6K30	34,4	46,9	50,5
1 1/4	4-D6K1 1/4	4-D6K1 1/4RP	PC4-D6K1 1/4	44,4	49,4	50,5
1 5/16	4-D6K1 5/16	4-D6K1 5/16RP	PC4-D6K1 5/16	44,4	50,9	50,5
1 5/8	4-D6K1 5/8	4-D6K1 5/8RP	PC4-D6K1 5/8	44,4	61,4	65,5
1 13/16	4-46=1 13/16	4-46=1 13/16RP	PC4-D6K46	44,4	67,4	65,5

INCH LONG

3/8	4-D6K3/8L	4-D6K3/8LRP	PC4-D6K3/8L	30	22	38,5
7/16	4-D6K7/16L	4-D6K7/16LRP	PC4-D6K7/16L	30	23,5	38,5
1/2	4-D6K1/2L	4-D6K1/2LRP	PC4-D6K1/2L	30	26	38,5
9/16	4-D6K9/16L	4-D6K9/16LRP	PC4-D6K9/16L	30	27,5	38,5
5/8	4-D6K5/8L	4-D6K5/8LRP	PC4-D6K5/8L	35	29,5	38,5
11/16	4-D6K11/16L	4-D6K11/16LRP	PC4-D6K11/16L	35	31	38,5
3/4	4-D6K19=3/4L	4-D6K19=3/4LRP	PC4-D6K19L	35	34	38,5
13/16	4-D6K13/16L	4-D6K13/16LRP	PC4-D6K13/16L	35	36	38,5
7/8	4-D6K7/8L	4-D6K7/8LRP	PC4-D6K7/8L	34,4	36,9	82,5
15/16	4-D6K15/16L	4-D6K15/16LRP	PC4-D6K15/16L	35	40	40,5
1 1/16	4-D6K27=1 1/16L	4-D6K27=1 1/16LRP	PC4-D6K27L	34,4	42,9	45,5
1 3/16	4-D6K30=1 3/16L	4-D6K30=1 3/16LRP	PC4-D6K30L	34,4	46,9	50,5
1 1/4	4-D6K1 1/4L	4-D6K1 1/4LRP	PC4-D6K1 1/4L	44,4	49,4	82,5
1 5/16	4-D6K1 5/16L	4-D6K1 5/16LRP	PC4-D6K1 5/16L	44,4	50,9	50,5
1 13/16	4-D6K46=1 13/16L	4-D6K46=1 13/16LRP	PC4-D6K46L	44,4	67,4	65,5



SIZE	SOCKET PART NO.	SOCKET WITH COVER	PLASTIC COVER	Ø d	Ø D	L
------	-----------------	-------------------	---------------	-----	-----	---

METRIC

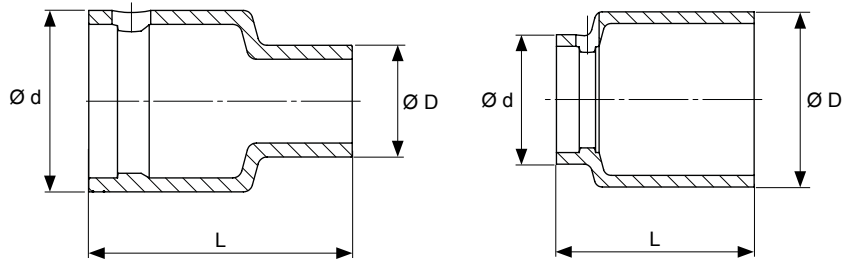
4	4-10M	4-10MRP	PC4-10M	30	22	38,5
10	4-11M	4-11MRP	PC4-11M	30	23,5	38,5
12	4-12M	4-12MRP	PC4-12M	30	24,7	38,5
13	4-13M	4-13MRP	PC4-13M	30	26	38,5
14	4-14M	4-14MRP	PC4-14M	30	27,5	38,5
15	4-15M	4-15MRP	PC4-15M	35	28,5	38,5
16	4-16M	4-16MRP	PC4-16M	35	29,5	38,5
17	4-17M	4-17MRP	PC4-17M	35	31	38,5
18	4-18M	4-18MRP	PC4-18M	35	32,5	38,5
19	4-19=3/4M	4-19=3/4MRP	PC4-19M	35	34	38,5
21	4-21M	4-21MRP	PC4-21M	35	36	38,5
22	4-22M	4-22MRP	PC4-22M	34,2	36,9	38,5
24	4-24M	4-24MRP	PC4-24M	35	40	40,5

METRIC LONG

10	4-10ML	4-10MLRP	PC4-10ML	30	22	82,5
12	4-12ML	4-12MLRP	PC4-12ML	30	24,7	82,5
13	4-13ML	4-13MLRP	PC4-13ML	29,2	25,2	82,5
14	4-14ML	4-14MLRP	PC4-14ML	29,2	26,7	82,5
15	4-15ML	4-15MLRP	PC4-15ML	35	28,5	82,5
16	4-16ML	4-16MLRP	PC4-16ML	34,2	28,7	82,5
17	4-17ML	4-17MLRP	PC4-17ML	35	31	82,5
18	4-18ML	4-18MLRP	PC4-18ML	34,2	31,7	82,5
19	4-19=3/4ML	4-19=3/4MLRP	PC4-19ML	34,2	33,2	82,5
24	4-24ML	4-24MLRP	PC4-24ML	34,4	39,4	82,5



1/2"



SIZE	SOCKET PART NO.	SOCKET WITH COVER	PLASTIC COVER	Ø d	Ø D	L
------	-----------------	-------------------	---------------	-----	-----	---

METRIC

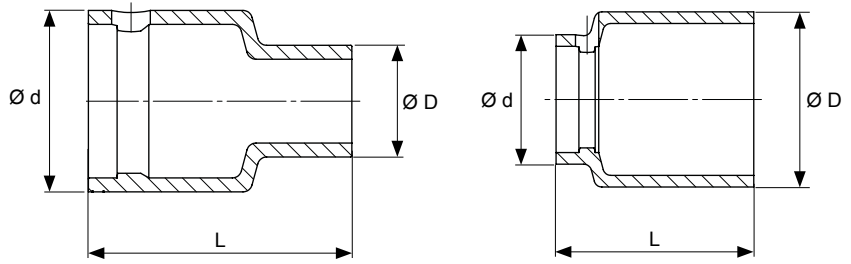
8	4-SF8	4-SF8RP	PC4-SF8	30	19,3	38,5
10	4-SF10	4-SF10RP	PC4-SF10	30	22	38,5
11	4-SF11	4-SF11RP	PC4-SF11	30	23,5	38,5
12	4-SF12	4-SF12RP	PC4-SF12	30	24,7	38,5
13	4-SF13	4-SF13RP	PC4-SF13	30	26	38,5
14	4-SF14	4-SF14RP	PC4-SF14	30	27,5	38,5
15	4-SF15	4-SF15RP	PC4-SF15	35	28,5	38,5
16	4-SF16	4-SF16RP	PC4-SF16	35	29,5	38,5
17	4-SF17	4-SF17RP	PC4-SF17	35	31	38,5
18	4-SF18	4-SF18RP	PC4-SF18	35	32,5	38,5
19	4-SF19=3/4	4-SF19=3/4RP	PC4-SF19	35	34	38,5
21	4-SF21	4-SF21RP	PC4-SF21	35	36	38,5
22	4-SF22	4-SF22RP	PC4-SF22	34,2	36,9	38,5
24	4-SF24	4-SF24RP	PC4-SF24	35	40	40,5
27	4-SF27=1 1/16	4-SF27=1 1/16RP	PC4-SF27	34,4	42,9	45,5
30	4-SF30=1 3/16	4-SF30=1 3/16RP	PC4-SF30	34,4	46,9	50,5
32	4-SF32	4-SF32RP	PC4-SF32	44,4	49,4	50,5
33	4-SF33	4-SF33RP	PC4-SF33	44,4	50,9	50,5
36	4-SF36	4-SF36RP	PC4-SF36	44,4	54,4	56,5

METRIC LONG

10	4-SF10L	4-SF10LRP	PC4-SF10L	30	22	82,5
11	4-SF11L	4-SF11LRP	PC4-SF11L	30	23,5	82,5
12	4-SF12L	4-SF12LRP	PC4-SF12L	30	24,7	82,5
13	4-SF13L	4-SF13LRP	PC4-SF13L	29,2	25,2	82,5
14	4-SF14L	4-SF14LRP	PC4-SF14L	29,2	26,7	82,5
15	4-SF15L	4-SF15LRP	PC4-SF15L	35	28,5	82,5
16	4-SF16L	4-SF16LRP	PC4-SF16L	34,2	28,7	82,5
17	4-SF17L	4-SF17LRP	PC4-SF17L	35	31	82,5
18	4-SF18L	4-SF18LRP	PC4-SF18L	34,2	31,7	82,5
19	4-SF19=3/4L	4-SF19=3/4LRP	PC4-SF19L	34,2	33,2	82,5
21	4-SF21L	4-SF21LRP	PC4-SF21L	34,4	35,4	82,5
22	4-SF22L	4-SF22LRP	PC4-SF22L	34,4	36,9	82,5
24	4-SF24L	4-SF24LRP	PC4-SF24L	34,4	39,4	82,5
27	4-SF27=1 1/16L	4-SF27=1 1/16LRP	PC4-SF27L	34,4	42,9	82,5
30	4-SF30=1 3/16L	4-SF30=1 3/16LRP	PC4-SF30L	34,4	46,9	82,5
32	4-SF32L	4-SF32LRP	PC4-SF32L	44,4	49,4	82,5
36	4-SF36L	4-SF36LRP	PC4-SF36L	44,4	54,4	82,5
41	4-SF41L	4-SF41LRP	PC4-SF41L	44,4	61,4	82,5



1/2"

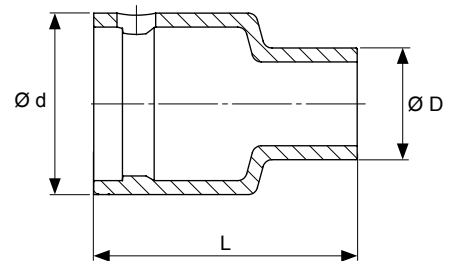


SIZE	SOCKET PART NO.	SOCKET WITH COVER	PLASTIC COVER	Ø d	Ø D	L
------	-----------------	-------------------	---------------	-----	-----	---

METRIC

10	4-E10	4-E10RP	PC4-E10	30	19,3	38,5
12	4-E12	4-E12RP	PC4-E12	30	21,5	38,5
14	4-E14	4-E14RP	PC4-E14	30	23,5	38,5
16	4-E16	4-E16RP	PC4-E16	30	25,5	38,5
18	4-E18	4-E18RP	PC4-E18	30	27,5	38,5
20	4-E20	4-E20RP	PC4-E20	35	29,5	38,5

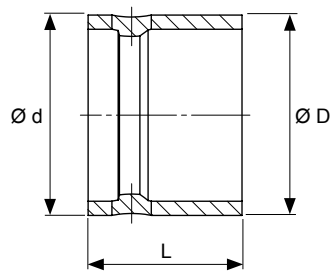
FÖRLÄNGNINGAR / EXTENSIONS / VERLÄNGERUNGEN



SIZE	SOCKET PART NO.	SOCKET WITH COVER	PLASTIC COVER	Ø d	Ø D	L
------	-----------------	-------------------	---------------	-----	-----	---

METRIC

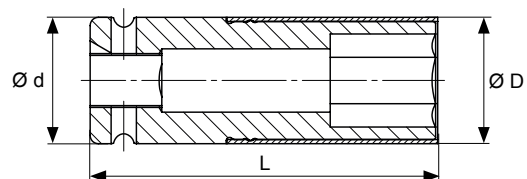
2	EB44-2	EB44-2RP	PCEB44-2	33,2	20,8	35
3	EB44-3	EB44-3RP	PCEB44-3	33,2	20,8	60
4	EB44-4	EB44-4RP	PCEB44-4	33,2	20,8	86
5	EB44-5	EB44-5RP	PCEB44-5	33,2	20,8	111
6	EB44-6	EB44-6RP	PCEB44-6	33,2	20,8	136
7	EB44-7	EB44-7RP	PCEB44-7	33,2	20,8	161,5
8	EB44-8	EB44-8RP	PCEB44-8	33,2	20,8	186,5
10	EB44-10	EB44-10RP	PCEB44-10	33,2	20,8	237,5
12	EB44-12	EB44-12RP	PCEB44-12	33,2	20,8	288,5



SIZE	SOCKET PART NO.	SOCKET WITH COVER	PLASTIC COVER	Ø d	Ø D	L
1/2-3/8	PA41	PA41RP	PCPA41	29,2	29,2	21
1/2-5/8	PA48	PA48RP	PCPA48	33,2	33,2	19
1/2-3/4	PA42	PA42RP	PCPA42	33,2	33,2	19







1/2"

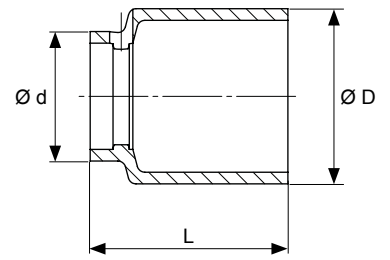
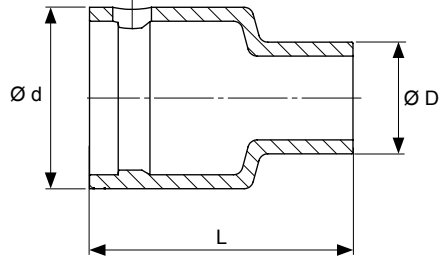
SIZE	SOCKET WITH COVER	PLASTIC COVER	$\varnothing d$	$\varnothing D$	L
------	-------------------	---------------	-----------------	-----------------	---

17	4-17LDRP	4-17LDRP-2	30	27	82,5
19	4-19LDRP	4-19LDRP-2	30	30	82,5
21	4-21LDRP	4-21LDRP-2	30	32	82,5
22	4-22LDRP	4-22LDRP-2	30	33,5	82,5
24	4-24LDRP	4-24LDRP-2	30	36	82,5

IMPACT SOCKETS SET

SET	CONTENT
LDSRP:1	4-17LDRP
	4-19LDRP
	4-21LDRP





SIZE	SOCKET PART NO.	SOCKET WITH COVER	PLASTIC COVER	Ø d	Ø D	L
------	-----------------	-------------------	---------------	-----	-----	---

METRIC

13	2-13	2-13RP	PC2-13	49,6	29,6	50,5
14	2-14	2-14RP	PC2-14	49,6	31,6	50,5
15	2-15	2-15RP	PC2-15	49,6	31,6	50,5
17	2-17	2-17RP	PC2-17	49,6	35,6	50,5
18	2-18	2-18RP	PC2-18	49,6	36,6	50,5
19	2-19=3/4	2-19=3/4RP	PC2-19	49,6	37,6	50,5
21	2-21	2-21RP	PC2-21	49,6	40,6	50,5
24	2-24	2-24RP	PC2-24	48,4	42,9	51

METRIC LONG

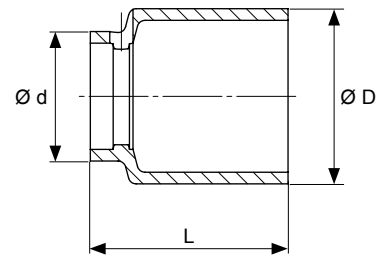
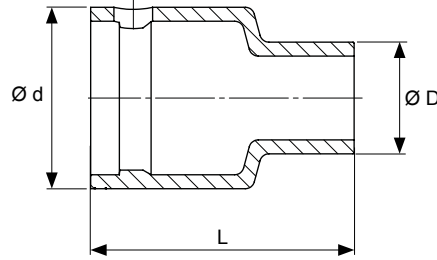
17	2-17L	2-17LRP	PC2-17L	49,6	36,6	101
19	2-19=3/4L	2-19=3/4LRP	PC2-19L	49,6	38,6	101
21	2-21L	2-21LRP	PC2-21L	49,6	41,1	101
24	2-24L	2-24LRP	PC2-24L	48,4	43,9	101

INCH

1/2	2-1/2	2-1/2RP	PC2-1/2	49,6	29,6	50,5
9/16	2-9/16	2-9/16RP	PC2-9/16	49,6	31,6	50,5
11/16	2-11/16	2-11/16RP	PC2-11/16	49,6	35,6	50,5
3/4	2-19=3/4	2-19=3/4RP	PC2-19	49,6	37,6	50,5
13/16	2-13/16	2-13/16RP	PC2-13/16	49,6	40,6	50,5
15/16	2-15/16	2-15/16RP	PC2-15/16	48,4	42,9	51

INCH LONG

11/16	2-11/16L	2-11/16LRP	PC2-11/16L	49,6	36,6	101
3/4	2-19=3/4L	2-19=3/4LRP	PC2-19L	49,6	38,6	101
13/16	2-13/16L	2-13/16LRP	PC2-13/16L	49,6	41,1	101
15/16	2-15/16L	2-15/16LRP	PC2-15/16L	48,4	43,9	101



3/4"

SIZE	SOCKET PART NO.	SOCKET WITH COVER	PLASTIC COVER	Ø d	Ø D	L
------	-----------------	-------------------	---------------	-----	-----	---

METRIC

13	2-D6K13	2-D6K13RP	PC2-D6K13	49,6	29,6	50,5
14	2-D6K14	2-D6K14RP	PC2-D6K14	49,6	31,6	50,5
15	2-D6K15	2-D6K15RP	PC2-D6K15	49,6	31,6	50,5
17	2-D6K17	2-D6K17RP	PC2-D6K17	49,6	35,6	50,5
18	2-D6K18	2-D6K18RP	PC2-D6K18	49,6	36,6	50,5
19	2-D6K19=3/4	2-D6K19=3/4RP	PC2-D6K19	49,6	37,6	50,5
21	2-D6K21	2-D6K21RP	PC2-D6K21	49,6	40,6	50,5
24	2-D6K24	2-D6K24RP	PC2-D6K24	48,4	42,9	51

METRIC LONG

17	2-D6K17L	2-D6K17LRP	PC2-D6K17L	49,6	36,6	101
19	2-D6K19=3/4L	2-D6K19=3/4LRP	PC2-D6K19L	49,6	38,6	101
21	2-D6K21L	2-D6K21LRP	PC2-D6K21L	49,6	41,1	101
24	2-D6K24L	2-D6K24LRP	PC2-D6K24L	48,4	43,9	101

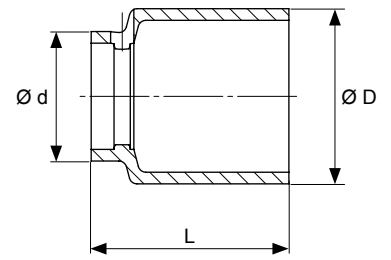
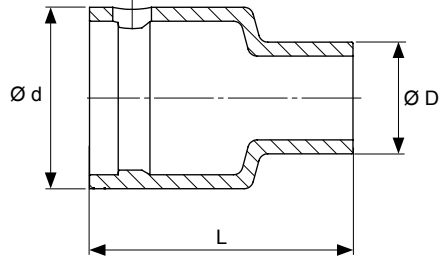
INCH

1/2	2-D6K1/2	2-D6K1/2RP	PC2-D6K1/2	49,6	29,6	50,5
9/16	2-D6K9/16	2-D6K9/16RP	PC2-D6K9/16	49,6	31,6	50,5
11/16	2-D6K11/16	2-D6K11/16RP	PC2-D6K11/16	49,6	35,6	50,5
3/4	2-D6K19=3/4	2-D6K19=3/4RP	PC2-D6K19	49,6	37,6	50,5
13/16	2-D6K13/16	2-D6K13/16RP	PC2-D6K13/16	49,6	40,6	50,5
15/16	2-D6K15/16	2-D6K15/16RP	PC2-D6K15/16	48,4	42,9	51

INCH LONG

11/16	2-D6K11/16L	2-D6K11/16LRP	PC2-D6K11/16L	49,6	36,6	101
3/4	2-D6K19=3/4L	2-D6K19=3/4LRP	PC2-D6K19L	49,6	38,6	101
13/16	2-D6K13/16L	2-D6K13/16LRP	PC2-D6K13/16L	49,6	41,1	101
15/16	2-D6K15/16L	2-D6K15/16LRP	PC2-D6K15/16L	48,4	43,9	101





SIZE	SOCKET PART NO.	SOCKET WITH COVER	PLASTIC COVER	Ø d	Ø D	L
------	-----------------	-------------------	---------------	-----	-----	---

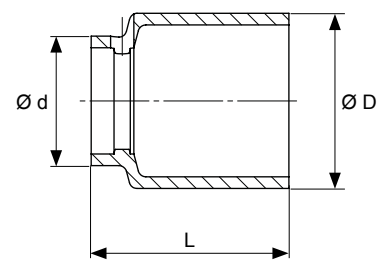
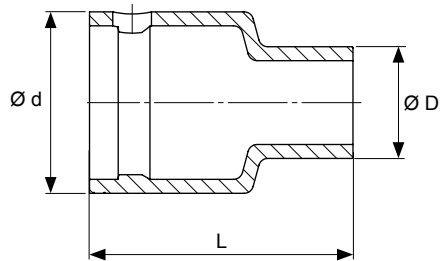
METRIC

13	2-SF13	2-SF13RP	PC2-SF13	49,6	29,6	50,5
14	2-SF14	2-SF14RP	PC2-SF14	49,6	31,6	50,5
15	2-SF15	2-SF15RP	PC2-SF15	49,6	31,6	50,5
17	2-SF17	2-SF17RP	PC2-SF17	49,6	35,6	50,5
18	2-SF18	2-SF18RP	PC2-SF18	49,6	36,6	50,5
19	2-SF19=3/4	2-SF19=3/4RP	PC2-SF19	49,6	37,6	50,5
21	2-SF21	2-SF21RP	PC2-SF21	49,6	40,6	50,5
24	2-SF24	2-SF24RP	PC2-SF24	48,4	42,9	51

METRIC LONG

17	2-SF17L	2-SF17LRP	PC2-SF17L	49,6	36,6	101
19	2-SF19=3/4L	2-SF19=3/4LRP	PC2-SF19L	49,6	38,6	101
21	2-SF21L	2-SF21LRP	PC2-SF21L	49,6	41,1	101
24	2-SF24L	2-SF24LRP	PC2-SF24L	48,4	43,9	101

TORX KRAFTHYLSOR / TORX IMPACT SOCKETS / TORX KRAFTSTECKSCHLÜSSEL-EINSÄTZE



SIZE	SOCKET PART NO.	SOCKET WITH COVER	PLASTIC COVER	Ø d	Ø D	L
------	-----------------	-------------------	---------------	-----	-----	---

METRIC

E18	2-E18	2-E18RP	PC2-E18	49,6	29,6	50,5
E20	2-E20	2-E20RP	PC2-E20	49,6	31,6	50,5
E22	2-E22	2-E22RP	PC2-E22	49,6	33,6	54,5
E24	2-E24	2-E24RP	PC2-E24	49,6	37,6	54,5

Vi utvecklar hela tiden vårt program med plastskyddade produkter. Ytterligare artiklar läggs till kontinuerligt. Precis som när det gäller vanliga hylsor gör vi även kundanpassade lösningar med plastskydd. Kontakta oss gärna för en specifik lösning. Våra konstruktörer står till ditt förfogande när du behöver hjälp.

---

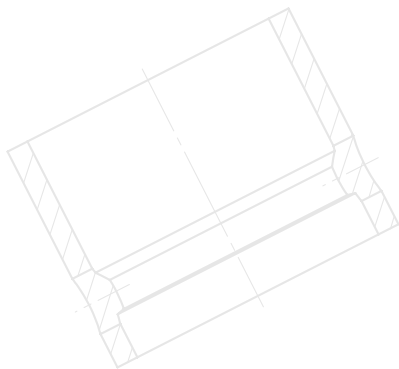
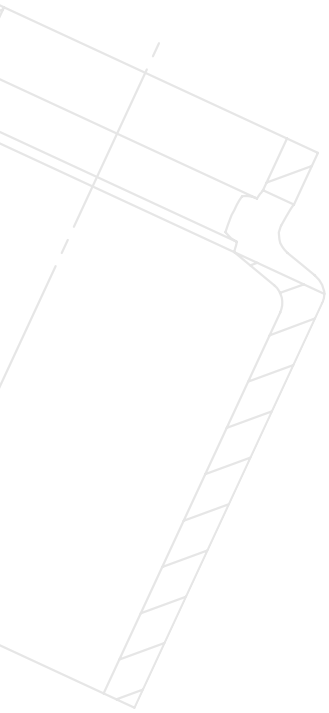
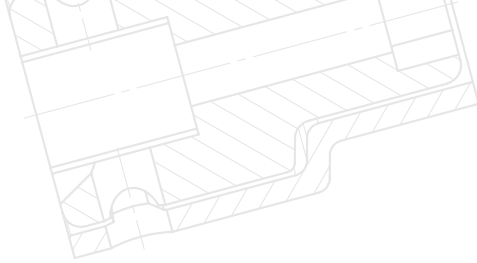
We are constantly developing our program with the plastic-protected products. Additional articles are added continuously. Just as with regular sockets we also make customized solutions with a plastic cover. Please contact us for a specific solution. Our engineers are at your disposal when you need help.

---

Wir entwickeln unser Programm mit den kunststoffgeschützten Produkten ständig weiter. Es werden kontinuierlich neue Produkte hinzugefügt. Wie bei den Standard- Kraftsteckschlüsseln bieten wir auch kundenspezifische Sonderlösungen mit Kunststoffschutz an. Bitte kontaktieren Sie uns. Unsere Ingenieure stehen Ihnen zur Verfügung und helfen Ihnen gerne bei der Lösung einer spezifischen Anforderung.



# SILVERLINE™ COVER



**MOMENTO**  
P.O. Box 14  
642 21 Flen  
Sweden

VISITING ADDRESS  
Kungsvägen 68  
642 34 Flen  
Sweden

CONTACT US  
+46 157-690 00  
[info@momento.se](mailto:info@momento.se)  
[www.momento.se](http://www.momento.se)