

HYDRAULIC TOOLS



MOMENTO

Momento has produced impact sockets since 1951 and we have over the years learned how important quality and functionality is for our costumers. For those who work with service and maintenance work, it is important to be able to rely on their tools and that the equipment works and does its job when it is used. We have used this knowledge when we decided to create our own program with hydraulic tools!

In our range you will find everything you need to get the job done safely and efficiently. We offer pumps, cylinders, tools and accesories that can be easily connected to the function that is needed for your application.



Hand pumps, 700 bar	4
Hand pumps high pressure, 1000-2800 bar	5
Air operated pumps, 700 bar	6-7
Electric pumps, 700 bar	8-9
Cylinders, general	10
Standard cylinders NSSS	11
Compact cylinders NSCS	12
Flat cylinders NSLS	12
Telescopic cylinders	13
Hollow cylinders NSHS	14
Hollow cylinders, aluminum ACHC	15
Aluminum cylinders SSA	16
Lock nut aluminum cylinders ALNC	17
Lock nut cylinders JLLC	18
Lock nut low cylinders JLPC	19
4-50 ton pullers	20
3-piece counterhold	21
Push puller	22
50-150 ton pullers	23
Spreaders SR & TL	24
Lifting wedge HLW	25
Nutsplitter HNS	26
Mechanical flange spreader MFS	27
Portabel power kit TE	28-29
Hoses and couplers	30-31
Accessories cylinders NSSS	32
Manifold and fittings	32-33
Gauge, fittings, adaptors	34-35
Safety	36-39

**ALL CYLINDERS,
TOOLS AND ACCESSORIES
IS DESIGNED FOR 700 BAR
HYDRAULIC PRESSURE**

HAND PUMPS ALUMINUM, 700 BAR

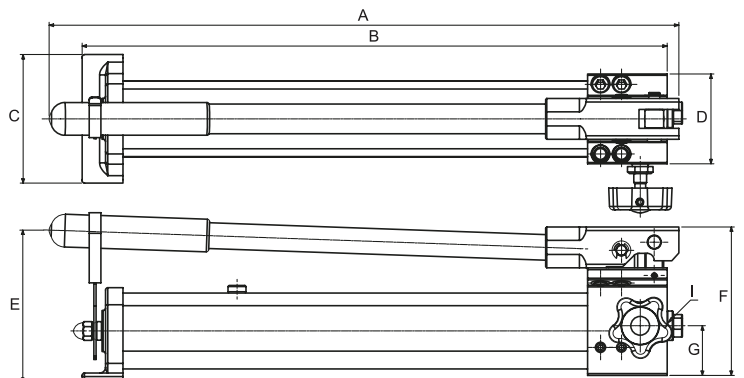
- Easy to carry – Made of aluminum.
 - Ergonomic – Easy grip pump lever and relief knob.
 - High Speed – The pumps have 2-step function that automatically switches between high speed and high pressure.
 - Safe to use – A built-in relief valve prevents excessive pressure.
- NOTE!** Always use tools designed for the hydraulic pressure provided by the pump.



AHP701, AHP702, AHP703

Part No	Pressure rating (bar)		Usable oil volume (cm ³)	Oil volume per stroke (cm ³)		A (mm)	B (mm)	C (mm)	D (mm)	E (mm)	F (mm)	G (mm)	I	Weight (kg)
	1st	2nd		1st	2nd									
AHP701	14	700	350	12,9	1,0	391	361	110	77	140	127	42,5		3,3
AHP702	14	700	1000	12,9	2,3	542	513	110	77	130	127	42,5	3/8"-NPT	4,3
AHP703	14	700	2000	12,9	2,3	623	556	150	102	135	135	50,0		6,4

The pumps can be supplied with hose, pressure gauge and couplers that fits our cylinders and other tools. Add -S or -SG in the name.
 Ex. AHP 702-S: Hand pump AHP 702 with hose, 2 meters, and coupling, TE604. See page 30.
 Ex. AHP 702-SG: As above + pressure gauge and gauge adapter. See page 34.



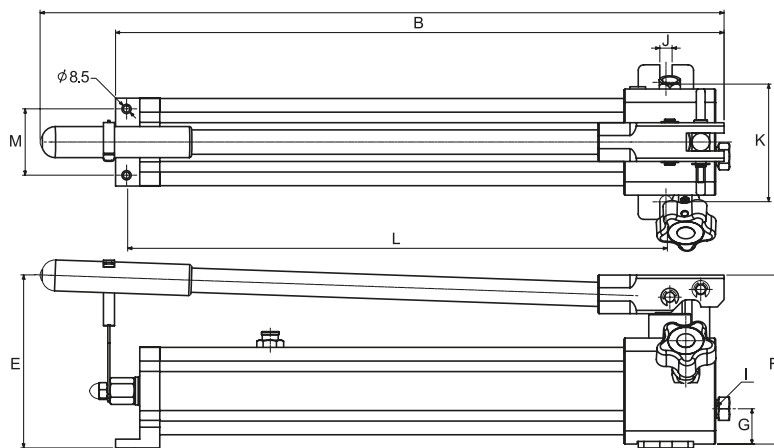
HIGH PRESSURE HAND PUMPS, 1000-2800 BAR

- Intended for tools that require high pressure. For example bolt tensioner.
 - Oil reservoir in aluminum and valve made in steel (AHP705 and UHP2800).
 - Ergonomic – Easy grip pump lever and relief knob.
 - The pumps have a 2-step function that automatically switches between high speed and high pressure.
 - Built-in relief valve prevents excessive pressure.
- NOTE!** Always use tools designed for the hydraulic pressure provided by the pump.

**HOSES AND
COUPLERS
PAGE 30**



Part No	Pressure rating (bar)		Usable oil capacity (cm ³)	Oil volume per stroke (cm ³)		A	B	C	D	E	F	G	I	J	K	L	M	Weight (kg)
	1st	2nd		(mm)	(mm)	(mm)	(mm)	(mm)	(mm)	(mm)	(mm)	(mm)	(mm)	(mm)	(mm)	(mm)	(mm)	
AHP704	14	1000	1000	12,9	1,6	539	501	110	77	145	127	42,5		-	-	-	-	4,1
AHP705	14	1500	2000	6,5	1,0	699	629	150	102	152	157	50,0	3/4"-16 UNF	-	-	-	-	6,6
UHP2800	14	2800	1000	12,9	0,6	620	488	80	140	108	157	26,0		11,2	108	165,5	60	6,9



NOTE! For AHP705, 1500 bar, requires special fittings and hoses. See page 31.
Momento do not provide hose or coupling for UHP2800 that provide 2800 bar hydraulic pressure.
UHP 2800 has a 60-degree internal sealing cone.

AIR OPERATED HYDRAULIC PUMPS, 700 BAR

- Can be operated by hand or foot.
- When operating with foot you get both hands free to hold the tool, (nut splitter, puller, cylinder etc) which is a great advantage for the operator.
- Tank sizes from 0,75-3 liters.
- Integrated relief valve prevents the pumps provide high pressure.
- The pumps are durable and designed for daily use.



AP3000S, AP1600S, AP921

**HOSES AND
COUPLERS
PAGE 30**

Part No	Max pressure (bar)	Usable oil volume (cm ³)	Oil flow (cm ³ /min)		Air consumption (l/min)
			1 bar	700 bar	
AP 921	700	750	550	130	250
AP1600S	700	1300	1250	193	250
AP3000S	700	2500	1250	193	250

Part No	A (mm)	B (mm)	C (mm)	D (mm)	E (mm)	F (mm)	G (mm)	Weight (kg)
AP 921	442	170	89	-	-	-	179	5
AP1600S	242	128	90	258	154	114	205	7,2
AP3000S	305	160	90	325	152	114	205	9,7

Required pressure: 6,9-9 bar.

To make it easy for our customers we can supply pumps with hose, pressure gauge and couplers suitable for our cylinders and tools.

Add -S or -SG in the name.

Ex. AP 1600S-S: Pump AP1600S with hose, 2 meters, and coupling, TE604. See page 30.

Ex. AP1600S-SG: As above + pressure gauge and gauge adapter. See page 34.



AP 921-SG is supplied with independent pressure gauge assembled with couplings. This may optionally be connected to the hose and the cylinder.

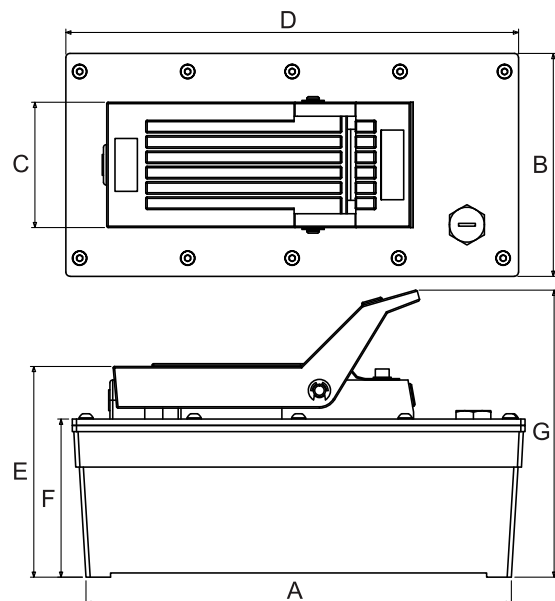
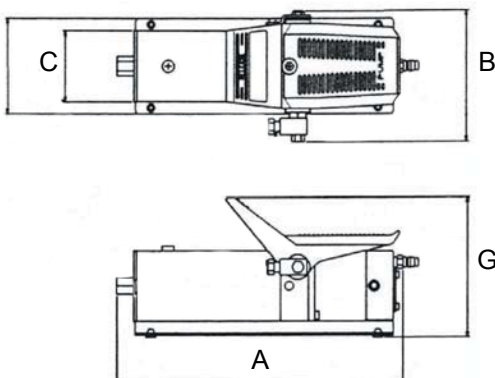
AP 1600S-SG and AP 3000S-SG are supplied with pressure gauge and hose assembled on the pumps.

NOTE! The pressure gauge can not be assembled directly on the pump.



AP1600S-SG used together with telescopic cylinder (NSLS20-10, page 13).

Left: AP921
Right: AP3000S, AP1600S



ELECTRIC PUMPS, 700 BAR

- Built for long life and daily use.
- Several built in pump elements give a large flow.
- Oil volume from 3-11 liters.
- Manual valves for single-acting tools.
- The electric motors are designed for 230 V AC as standard but can be ordered for 115 V AC. Start and stop of the electric motor via remote control (24 V, 3 meters cable).
- Pumps with large oil volumes and higher flows are produced on request.
- ***Momento can customize the pumps according to customer requirements.***
- ***Contact us!***

SOLID
CONSTRUCTION,
FOR
LONG LIFE



EP13S



Valve lever



EP211S

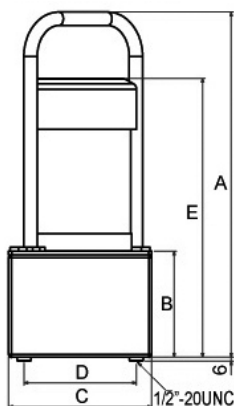
The oil flow is controlled by a manual control valve (2/2) for the pressure and return.

Remote control for starting and stopping of the electric motor.

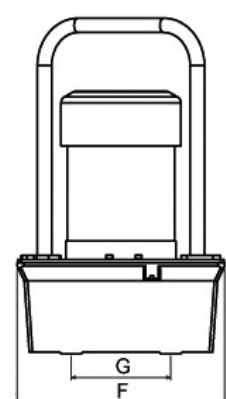
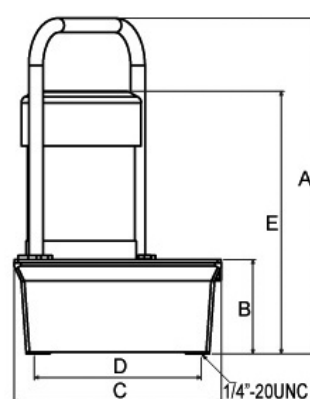
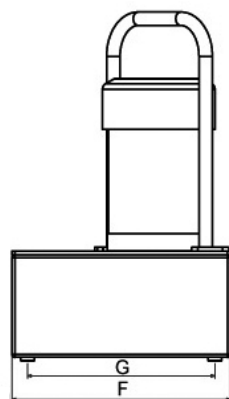
Part No	Max pressure (bar)	Usable oil volume (l)	Valve	Oil flow (l/min)			
				1 bar	70 bar	350 bar	700 bar
EP13S	700	2,4	2/2 advance/retract	4,2	3,1	0,33	0,26
EP18S	700	7,2		4,2	3,1	0,33	0,26
EP211S	700	9,5		4,2	3,1	0,33	0,26

Part No	Electric motor	Effect (kW)	Amp	A (mm)	B (mm)	C (mm)	D (mm)	E (mm)	F (mm)	G (mm)	Weight (kg)
EP13 S	single phase 230V 50/60Hz	0,37	4,8	511	149	296	251	405	27	149,4	27
EP18 S	single phase 230V 50/60Hz	0,37	4,8	505	142	312	251	395	312	149,4	31
EP211 S	single phase 230V 50/60Hz	1,12	4,8	555	170	229	180	480	350	300	37

EP211



EP13 & EP18



CYLINDERS, GENERAL

- All our cylinders are designed for a maximum hydraulic pressure of 700 bar (70 MPa).
- The cylinders are fitted with coupling (female part) designed for high flows. All cylinders can be supplied with quick couplers, see page 30.
- The piston rod is coated with hard chrome.
- Cylinder is surface treated with nitrocarburizing with after oxidation ("nitrokarb").
- On top of the piston is a strong pressure head to avoid deformation of the piston.
- The cylinders have a built-in return spring that pulls back the plunger when the pressure is relieved.



Part No	Kapacitet (ton/kN)		Stroke (mm)	Cylinder effective area (cm ²)	Oil cap (cm ³)	Height (mm)		D Ø (mm)	E Ø (mm)	F Ø (mm)	H (mm)	J (mm)	K (mm)	O Ø UN
						A Min.	B Max.							
N5551	4,5	45,0	26	6,4	17	110	136	38	28,6	25,4	19	25	6	3/4"-16
N5553			76		54	165	241							
N5555	5	49,5	127	7,1	90	216	343	38	30	25,4	19	25	6	3/4"-16
N5557			183		129	273	456							
N5559			232		164	324	556							
N55101	10	101	25	14,4	36,5	90	115	57	42,8	38	19	40	6	10-24 UN
N55102			51		73	121	172							
N55104			101		145	171	272							
N55106			152		242	247	399							
N55108	10	111	203	15,9	323	298	501	57	45	38	19	40	6	1"-8
N551010			255		406	350	605							
N551012			305		486	400	705							
N551014			356		567	451	807							
N55151	15	166	26	23,8	63	124	150	73	55	40	19	38	9,6	1"-8
N55152			52		125	150	202							
N55154			102		243	200	302							
N55156			153		363	272	425							
N55158			203		483	322	525							
N551510			254		604	373	627							
N551512			305		724	424	729							
N551514			355		845	475	830							
N55251	25	269	25	38,5	98	140	165	88	70	55	25	50	10,5	1 1/2"-16
N55252			51		196	165	216							
N55254			102		392	216	318							
N55256			158		610	273	431							
N55258			209		806	324	533							
N552510			260		1002	375	635							
N552512			311		1196	426	737							
N552514			361		1390	476	837							
N55308	30	309	209	44,2	925	388	597	103	75	60	57	50	10,5	1 1/2"-16
N55502	50	496	51	70,9	361	177	228	127	95	80	33	70	3	-
N55504			101		719	229	330							
N55506			157		1116	283	440							
N555013			335		2377	461	796							
N55756	75	792	155	113,1	1752	285	440	152	120	95	30	70	3	-
N557513			333		3770	491	824							
N551006	100	1002	170	143,1	2432	358	528	177	135	105	40	70	3	-
N5510010			260		3720	448	708							

*N55101 lacks pressure head. 2 x 10-24 UN, cc: 19 mm.

STANDARD CYLINDERS - NSSS

- Capacity from 4,5-100 ton.
- Stroke lengths from 25-356 mm.
- Durable piston guide which makes the cylinders stable and durable.
- Hard chromed piston rod and cylinder tube coated with "nitrokarb".
- The interior of the cylinder roller polished to provide a good sealing surface.
- The cylinders are single-acting and fitted with return spring.

ACCESSORIES
PAGE 32

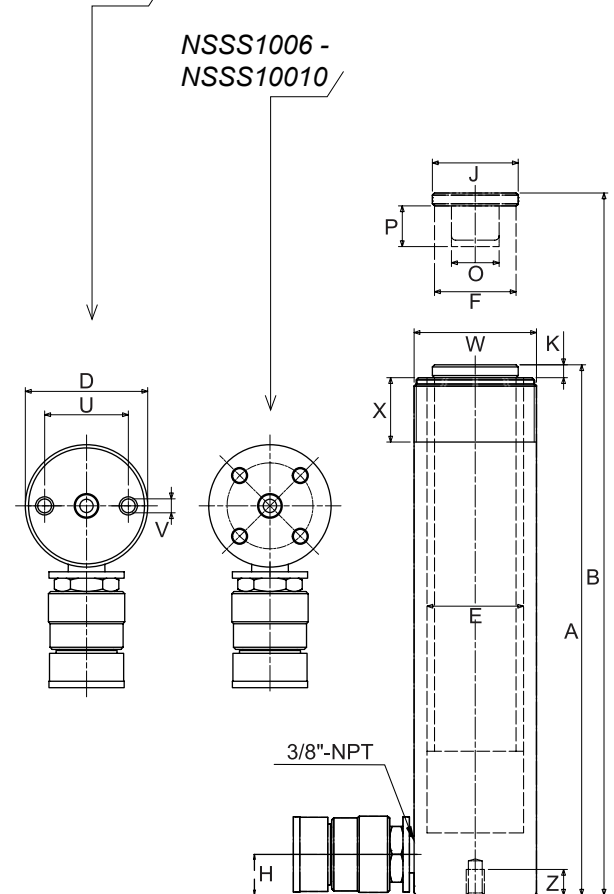
MAX
700 BAR



P (mm)	U (mm)	V Ø UNC	Z (mm)	W Ø UN	X (mm)	Weight (kg)	Part No
14	25	1/4"-20	14	1 1/2"-16	28	1	NSSS51
						1,5	NSSS53
						1,9	NSSS55
16	25	1/4"-20	14	1 1/2"-16	28	2,4	NSSS57
						2,8	NSSS59
6,5	39	5/16"-18	13	2 1/4"-14	30	1,8	NSSS101
2,3						NSSS102	
3,3						NSSS104	
4,4						NSSS106	
5,4						NSSS108	
6,4						NSSS1010	
6,8						NSSS1012	
8,2						NSSS1014	
3,3						NSSS151	
4,1						NSSS152	
25,4	47,7	3/8"-16	13	2 3/4"-16	30	5	NSSS154
						6,8	NSSS156
						8,2	NSSS158
						9,5	NSSS1510
						10,9	NSSS1512
						11,8	NSSS1514
						5,9	NSSS251
						6,4	NSSS252
25,4	58	1/2"-13	19	3 5/16"-20	50	8,2	NSSS254
						10	NSSS256
						12,2	NSSS258
						14,1	NSSS2510
						16,3	NSSS2512
						17,7	NSSS2514
						5,9	NSSS251
6,4	NSSS252						
25,4	-	-	-	4"-12	50	18,1	NSSS308
						15	NSSS502
						19,1	NSSS504
						23,1	NSSS506
						37,6	NSSS5013
-	95	1/2"-13	19	5"-12	55	29,5	NSSS756
						59	NSSS7513
						59	NSSS1006
-	-	-	-	5 3/4"-12	45	59	NSSS7513
						59	NSSS1006
-	139	3/4"-10	25	6 7/8"-12	45	59	NSSS1006
						72,6	NSSS10010

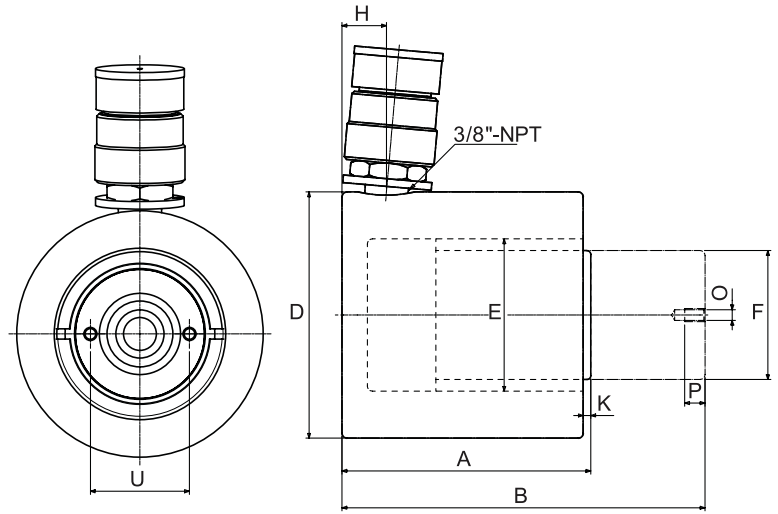
NSSS51 -
NSSS7513

NSSS1006 -
NSSS10010



COMPACT CYLINDERS - NSCS

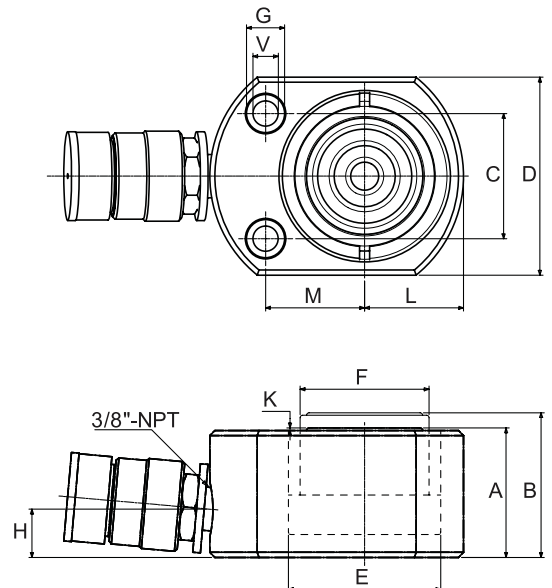
- Capacity from 10-100 ton.
- Compact universal cylinders with return spring.



Part No	Capacity (ton/kN)		Stroke (mm)	Cylinder effective area (cm ²)	Oil cap (cm ³)	A (mm)	B (mm)	D (mm)	E Ø (mm)	F Ø (mm)	H (mm)	K (mm)	O Ø (mm)	P Ø (mm)	U (mm)	Weight (kg)
NSCS101	10	101	38	14,4	55	88	126	78	42,8	38,0	17,5	5,0	M4	8	26	4,1
NSCS201	20	198	45	28,3	127	98	143	97	60,0	50,8	17,5	3,0	M5	9	39	5,0
NSCS302	30	309	62	44,2	274	117	179	107	75,0	63,5	19,0	3,0	M5	8	39	6,8
NSCS502	50	496	60	71	429	122	182	127	95,0	70,0	19,0	2,0	M5	8	39	10,9
NSCS1002	100	1002	58	143	830	141	199	165	135	92,0	19,0	1,5	M8	10	55	22,7

FLAT CYLINDERS - NSLS

- Capacity 5-150 ton.
- Built-in return spring.



Part No	Capacity (ton/kN)		Stroke (mm)	Cylinder effective area (cm ²)	Oil cap (cm ³)	A (mm)	B (mm)	C (mm)	D (mm)	E Ø (mm)	F Ø (mm)	G Ø (mm)	L (mm)	M (mm)	V Ø (mm)	Weight (kg)
NSLS50	5	53	6	7,5	4,5	33	39	28,5	44	31	25,4	9,5	22,0	22,0	5,3	1,0
NSLS100	10	106	12	15,2	18	42	54	36,5	60	44	38,0	11,0	30,0	34,0	7,5	1,4
NSLS200	20	198	12	28,3	34	51	63	49,3	78	60	50,8	15,0	39,0	39,0	10,0	3,1
NSLS300	30	293	13	41,9	54	58	71	52,3	95	73	63,5	16,0	47,5	47,5	10,0	4,5
NSLS500	50	496	16	71	113	66	82	66,5	115	95	70,0	19,0	57,5	58,0	11,0	6,8
NSLS750	75	792	16	113	180	79	95	76,2	145	120	82,5	20,5	72,5	70,0	13,5	11,3
NSLS1000	100	1002	16	143	229	85	101	76,2	160	135	92,0	20,5	80,0	78,0	13,5	14,5
NSLS1500	150	1497	17	214	363	100	117	117	195	165	115	20,5	97,5	87,0	13,5	26,3

TELESCOPIC CYLINDERS - NSLS

- 2 step provides long stroke.
- Load return.
- Capacity: 10/5 ton and 20/10 ton.

**OUR CYLINDERS
CAN BE SUPPLIED
WITH QUICK
COUPLERS
PAGE 30**

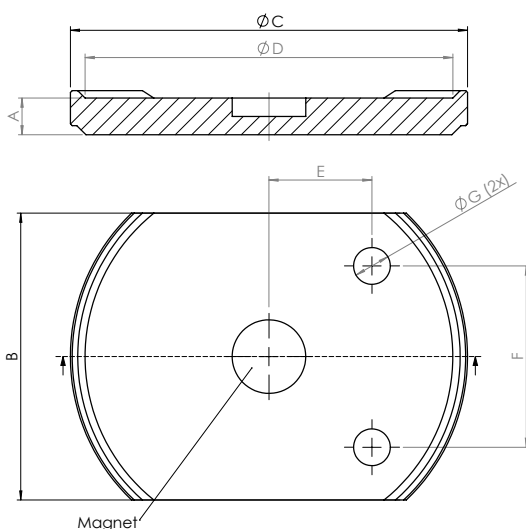


Dimensional drawing see page 12, NSLS

Part No	Capacity (ton/kN)	Stroke (mm)	Cylinder effective area (cm ²)	Oil cap (cm ³)	A (mm)	B (mm)	C (mm)	D (mm)	E Ø (mm)	F Ø (mm)	G Ø (mm)	L (mm)	M (mm)	V Ø (mm)	Weight (kg)	
NSLS10-05	10/5	106/53	12+13	15,2/7,5	28	42	67	36,5	60	44/31	38/25	11	30	34	7,5	1,5
NSLS20-10	20/10	198/106	12+13	28,3/15,2	54	51	76	49,3	78	60/44	51/38	15	39	39	10	2,6

SPACERS FOR CYLINDERS, NSLS

- Provides flexible construction dimensions.
- Magnet for secure mounting.
- Simple combining several ways.



MLM100 fits NSLS100 and NSLS10-05
MLM200 fits NSLS200 and NSLS20-10

Part No Complete	Part No	Height A (mm)	B (mm)	C Ø (mm)	D Ø (mm)	E (mm)	F (mm)	G Ø (mm)
MLM100	MLM110	10	60	90	82,5	22,75	36,5	7,5
	MLM120	20						
	MLM140	40						
MLM200	MLM210	10	78	108	100	28	49,3	10
	MLM220	20						
	MLM240	40						

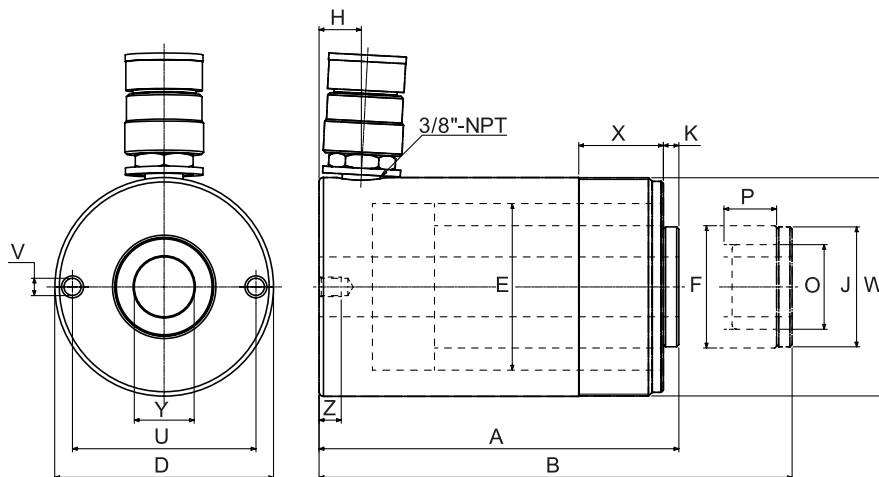
HOLLOW CYLINDERS - NSHS

- Capacity from 12-100 tons.
- Hard chromed piston rod, cylinder tubes coated with "nitrokarb".
- Built-in return spring.
- Can be used for both pushing and pulling work (with a threaded rod through the hole).

**OUR CYLINDERS
CAN BE SUPPLIED
WITH QUICK
COUPLERS
PAGE 30**



Part No	Capacity (ton/kN)	Stroke (mm)	Cylinder effective area (cm ²)	Oil cap (cm ³)	A (mm)	B (mm)	D Ø (mm)	E Ø (mm)	F Ø (mm)	H (mm)	J (mm)	K (mm)	O UN	P (mm)	U (mm)	V UNC	W Ø UN	Y Ø (mm)	Z (mm)	Weight (kg)	
NSHS120-T	12	130	8	18,5	15	60	68	73	54,1	12,5	-	-	-	-	50,8	5/16"-18	2 3/4-16	20,5	9	1,5	
NSHS121-T		42	79	120	162	35	19		19,5									3			
NSHS1211		42	79	120	162	35	19		19,5									3			
NSHS123-T		76	143	184	260	35	19		20,5									4,2			
NSHS202	20	238	51	34	173	162	213	98,5	75	55	19	54	7	1 9/16"-16	25	82,6	3/8"-16	3 7/8-12	27	9,4	7,5
NSHS206			155	527	306	461	25														82,6
NSHS302	30	334	65	48	310	178,5	243,5	117	90	65	21,5	60	0,5	1 7/8"-16	25	92,0	3/8"-16	4 1/2-12	34	14	11
NSHS306			160	763	330	490	25														92,0
NSHS603	60	627	76	90	680	247,5	323,5	158,6	125	90	32	89	12	2 3/4"-16	25	130	1/2"-12	6 1/4-12	54	14	26
NSHS606			152	1360	323,5	475,5	25														130
NSHS1003	100	1001	76	143	1085	254	330	213	165	125	38	125	12	4"-16	30	178	5/8"-11	8 3/8-12	79	19	50



HOLLOW CYLINDERS ALUMINUM - ACHC

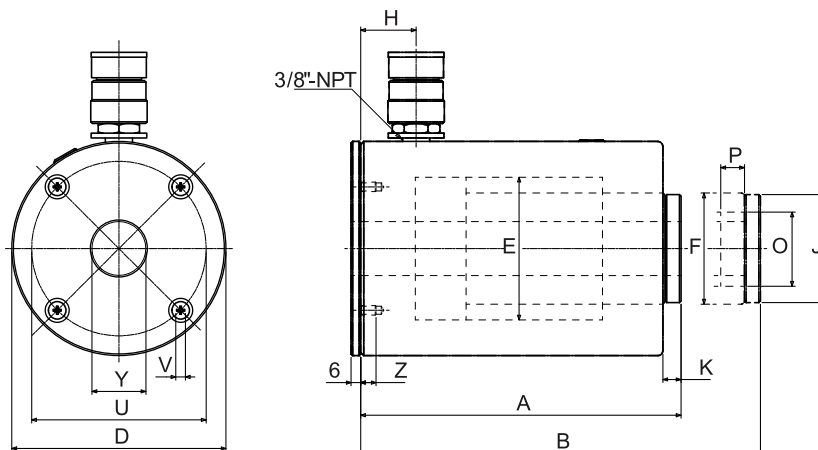
- Aluminum is lightweight.
- 30 and 60 ton capacity.
- Rod and cylinder are hard anodised for durable surface.
- Equipped with a steel plate at the bottom and the pressure head in steel.
- Carrying handle on 60 ton models.
- Aluminum cylinders are designed to withstand 5000 cycles at maximum pressure. Should last a whole life under normal service and maintenance work.



ACHC302 used here for removing shaft in back hoe loader.



Part No	Capacity (ton/kN)		Stroke (mm)	Cylinder effective area (cm ²)	Oil cap (cm ³)	A (mm)	B (mm)	D Ø (mm)	E Ø (mm)	F Ø (mm)	H (mm)	J (mm)	K (mm)	O UN	P (mm)	Y Ø (mm)	Weight (kg)	Part No
ACHC302	30	385	50	55,0	238	202	252	138	95	70	35	68	11,5	1 7/8"-16	25	34	10,0	ACHC302
ACHC306			150		715	327	477										14,0	ACHC306
ACHC602	60	627	50	89,5	448	219	269	198	125	100	35	89	14	2 3/4"-16	25	54	19,5	ACHC602
ACHC606			150		1342	319	469										25,0	ACHC606

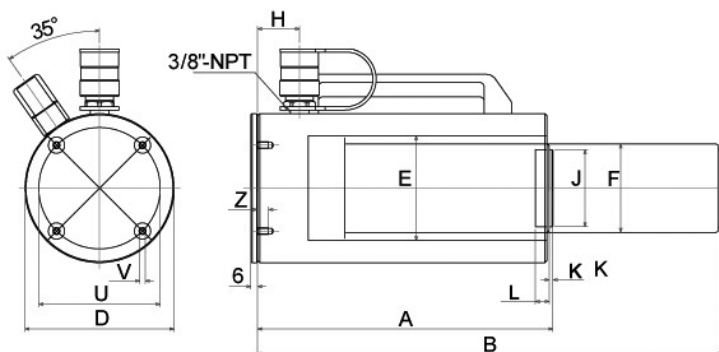


ALUMINUM CYLINDERS - SSA

- Capacity from 20-100 ton.
- Equipped with a steel plate at the bottom and the pressure head in steel.
- Stroke lengths from 50-250 mm.
- Rod and cylinder are hard anodised for durable surface.
- Equipped with built-in return spring.
- Carrying handle on the 50 and 100 ton models.
- Aluminum cylinders are designed to withstand 5000 cycles at maximum pressure. Should last a whole life under normal service and maintenance work.



Part No	Capacity (ton/kN)		Stroke (mm)	Cylinder effective area (cm ²)	Oil cap (cm ³)	A (mm)	B (mm)	D Ø (mm)	E Ø (mm)	F Ø (mm)	H (mm)	J (mm)	K (mm)	L (mm)	Weight (kg)	Part No
SSA202	20	211	50	30,2	166	168	218	92	62	55	25	40	3	9	4,3	SSA202
SSA204			100		332	218	318								5,0	SSA204
SSA206			150		498	268	418								5,7	SSA206
SSA208			200		664	318	518								6,5	SSA208
SSA302	30	309	50	44,2	221	175	225	110	75	60	25	40	3	9	6,0	SSA302
SSA304			100		442	225	325								6,9	SSA304
SSA306			150		663	275	425								7,9	SSA306
SSA308			200		884	325	525								8,8	SSA308
SSA502	50	496	50	70,9	355	165	215	135	95	80	24	70	3	12	5,9	SSA502
SSA504			100		709	215	315								7,7	SSA504
SSA506			150		1064	265	415								12,7	SSA506
SSA5010			250		1773	368	618								16,4	SSA5010
SSA1002	100	1002	50	143,1	716	165	215	198	135	105	25	70	3	12	18,2	SSA1002
SSA1004			100		1431	215	315								21,0	SSA1004
SSA1006			150		2146	265	415								23,0	SSA1006
SSA10010			250		3577	368	618								31,0	SSA10010



**ELECTRIC PUMP
PAGE 8-9**



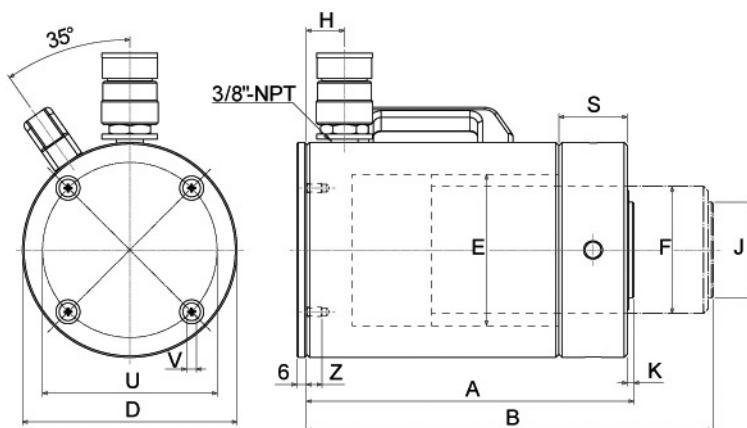
LOCK NUT ALUMINUM CYLINDERS - ALNC

- Can both lift and mechanically secure a load.
- Trapezoid threaded rod for quick adjustment of the lock nut.
- Capacity from 20-100 ton.
- Built-in return spring.
- Carrying handle on the 50 and 100 ton models.
- Aluminum cylinders are designed to withstand 5000 cycles at maximum pressure. Should last a whole life under normal service and maintenance work.

**OUR CYLINDERS
CAN BE SUPPLIED
WITH QUICK
COUPLERS
PAGE 30**



Part No	Capacity (ton/kN)		Stroke (mm)	Cylinder effective area (cm ²)	Oil cap (cm ³)	A (mm)	B (mm)	D Ø (mm)	E Ø (mm)	F Ø (mm)	H (mm)	J (mm)	K (mm)	L (mm)	Weight (kg)
ALNC202	20	211	50	30,2	166	212	262	92	62	Tr55x3	25	40	3	25	4,8
ALNC204			100		332	262	362								5,5
ALNC206			150		498	312	462								6,3
ALNC208			200		664	412	612								6,9
ALNC302	30	309	50	44,2	221	205	255	110	75	Tr60x3	25	40	3	30	6,9
ALNC304			100		442	255	355								7,7
ALNC306			150		663	305	455								8,6
ALNC308			200		884	355	555								9,6
ALNC502	50	496	50	70,9	355	212	262	135	95	Tr80x4	30	60	3	43	9,3
ALNC504			100		709	262	362								10,7
ALNC506			150		1064	312	462								13,7
ALNC508			200		1418	362	562								14,5
ALNC5010			250		1773	412	662								16,5
ALNC1002	100	1002	50	143	715	235	285	200	135	Tr105x6	45	70	3	51	22,0
ALNC1004			100		1430	285	385								25,0
ALNC1006			150		2145	335	485								29,0
ALNC1008			200		2860	385	585								33,0
ALNC10010			250		3575	438	688								35,0



Thanks to the threaded rod and nut can ALNC cylinders lift the load to the desired position, and then secure the load mechanically. This is done by the nut screwed down against the cylinder tube.



LOCK NUT CYLINDERS - JLLC

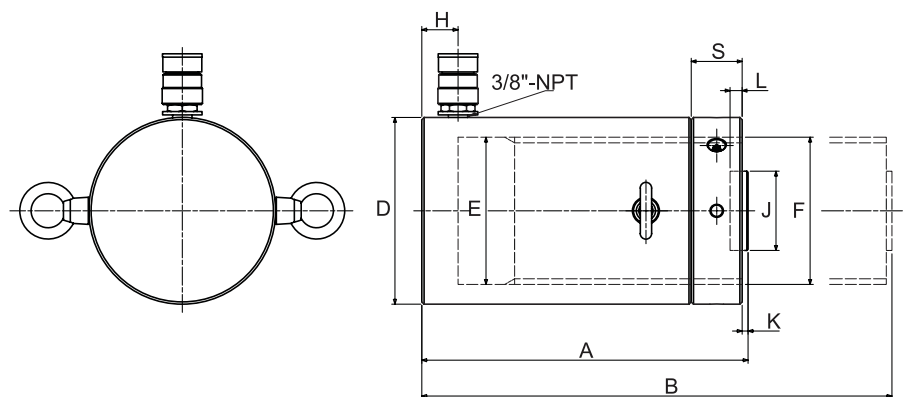
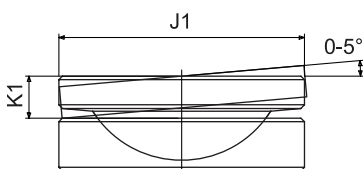
- Suitable for heavier duty applications.
 - Can both the lift and mechanically secure a load.
 - Tilting print head to take up uneven loading are available as accessories.
 - Hard chromed piston.
 - Capacity from 50-200 ton.
 - Load Return.
 - Equipped with lifting eyes.
 - Models with capacity up to 1000 ton are produced on request.
- Contact Us!**



Part No	Capacity (ton/kN)		Stroke (mm)	Cylinder effective area (cm ²)	Oil cap (cm ³)	A (mm)	B (mm)	D Ø (mm)	E Ø (mm)	F Ø (mm)	H (mm)	J (mm)	K (mm)	L (mm)	S (mm)	Weight (kg)
JLLC502	50	496	50	70,9	355	164	214	125	95	Tr95x4	20	70	2	13	35	15
JLLC506			150		1064	264	414									25
JLLC5010			250		1772	364	614									35
JLLC1002	100	929	50	133	665	187	237	165	130	Tr130x4	32	70	2	13	45	30
JLLC1006			150		1995	287	437									48
JLLC10010			250		3325	387	637									64
JLLC1502	150	1407	50	201	1005	209	259	205	160	Tr160x6	49	125	2	25	45	53
JLLC1506			150		3015	309	459									78
JLLC15012			300		6030	459	759									117
JLLC2002	200	1882	50	269	1345	243	293	235	185	Tr185x6	52	125	2	25	50	83
JLLC2006			150		4035	343	493									117
JLLC20012			300		8070	493	793									170

Accessories, Tilting saddle

Part No	J1 Ø (mm)	K1 Ø (mm)	Cylinder
TSA-100	70	24	JLLC502
			JLLC506
			JLLC5010
TSA-100	70	24	JLLC1002
			JLLC1006
			JLLC10010
TSA-200	125	20	JLLC1502
			JLLC1506
			JLLC15012
TSA-200	125	20	JLLC2002
			JLLC2006
			JLLC20012

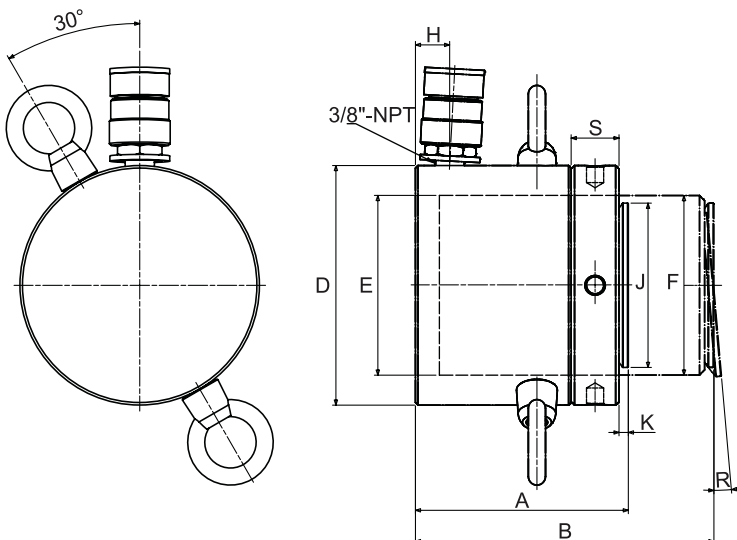


LOCK NUT LOW CYLINDER - JLPC

- Can both the lift and mechanically secure a load.
- Capacity from 60-520 ton.
- Load Return.
- Equipped with lifting eyes.
- The piston has a tilt saddle to take up uneven load.



Part No	Capacity (ton/kN)		Stroke (mm)	Cylinder effective area (cm ²)	Oil cap (cm ³)	A (mm)	B (mm)	D Ø (mm)	E Ø (mm)	F Ø (mm)	H (mm)	J Ø (mm)	K (mm)	R	S (mm)	Weight (kg)
JLPC602	60	606	50	86,6	433	125	175	140	105	TR105x6	20	96	6	5°	28	15
JLPC1002	100	1002		143	715	137	187	175	135	TR135x6	21	126	8		31	26
JLPC1502	150	1497		214	963	148	193	220	165	TR165x6	27	150	9		40	44
JLPC2002	200	1985	45	283	1274	155	200	245	190	TR190x6	30	180	10		43	57
JLPC2502	250	2541		380	1710	159	204	275	215	TR0215x6	32	200	11		44	74
JLPC4002	400	4008		572	2574	178	223	350	270	TR270x6	39	250	11		55	134
JLPC5002	500	4948		706	3179	192	237	400	300	TR300x6	48	285	10	62	189	



**ELECTRIC PUMP
PAGE 8-9**

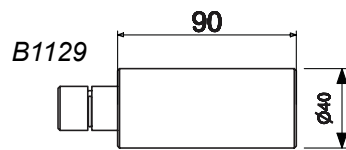
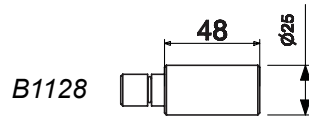


PULLERS , 4-50 TON

- Capacity from 4-50 ton.
- With built-in pump (PME) or with connection for external pump (PRE).
- Self-centering and locking arms.
- Can be used with 2 or 3 arms.
- Pump lever can be rotated 360°.
- Two-stage pump for 20 and 30 ton models.
- Comes in a handy storage bag.
Made of plastic for 4-12 ton and steel for 20-30 ton.
- Extension accompanying pullers and can be ordered extra.
B1128: 2 pcs to 4, 6, 8 ton and 4 pcs to 12 ton.
B1129: 1 pc to 20 ton and 2 pcs to 30 ton.

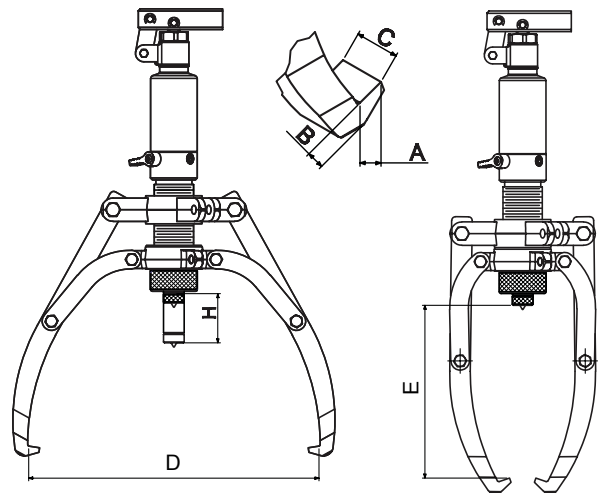


BUILT-IN OR EXTERNAL PUMP



PME600

PRE800

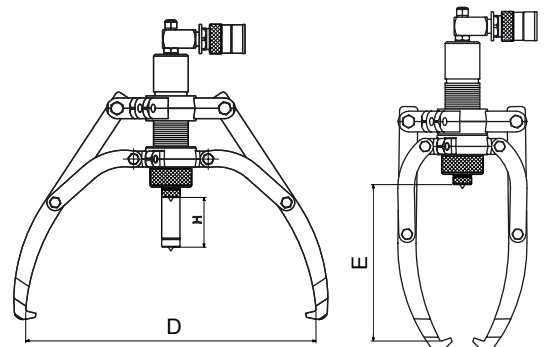


With built-in hand pump

Part No	Capacity (ton)	D Ø (mm)	E (mm)	Stroke H (mm)	A	B	C	Weight (kg)
PME 400	4	83-315	190	60	13	10	22	8,0
PME 600	6	90-390	230	70	13	10	22	9,8
PME 800	8	110-460	280	85	13	13	27,5	11,7
PME 1200	12	120-515	300	85	15	16,5	29	14,8
PME 2000	20	160-520	325	111	20	27	33	25,7
PME 3000	30	190-620	415	111	20	27	38	36,0

For external pump (700 bar)

Part No	Capacity (ton)	Oilcap (cm³)	D Ø (mm)	E (mm)	Stroke H (mm)	A	B	C	Weight (kg)
PRE 403	4	35	83-315	190	60	13	10	22	5,6
PRE 803	8	100	110-460	280	85	13	13	27,5	9,0
PRE 1203	12	145	120-515	300	85	15	16,5	29	11,7
PRE 2003	20	320	160-520	325	111	20	27	33	24,0
PRE 3003	30	475	190-620	415	111	20	27	38	34,0
PRE 50T	50	1150	140-860	455	160	23	35	60	140

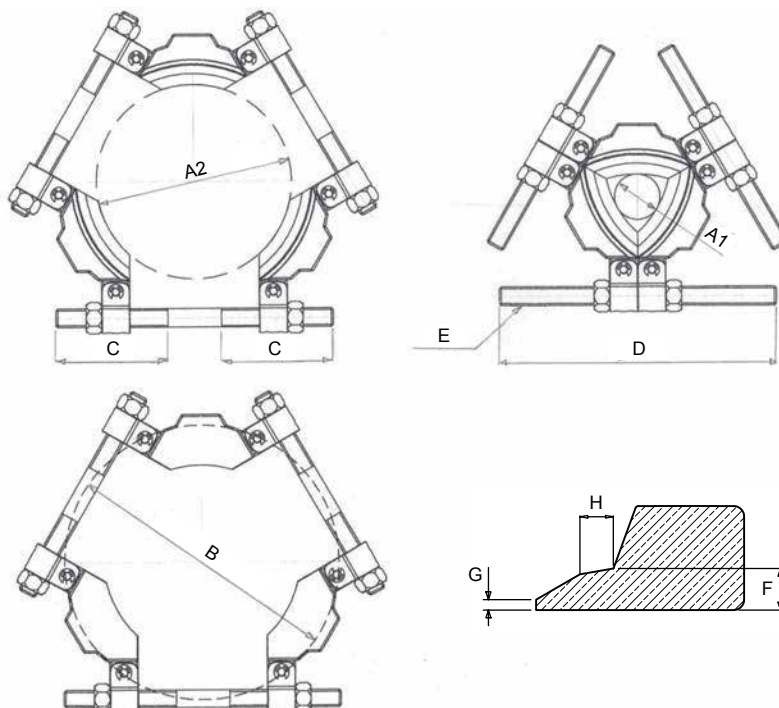


3-PIECE COUNTERHOLD

- Benefits force over a larger area.
- Used with 3-arm puller.
- 4 different sizes for shaft diameters from 26-495 mm.



Part No	Capacity (ton)	A1 (mm)	A2 (mm)	B Max (mm)	C (mm)	D (mm)	E	F (mm)	G (mm)	H (mm)	Weight (kg)
ET3-160	6	26	160	216	105	240	5/8"-11 UNC	8	2	6,5	3,5
ET3-210	8	50	210	280	117	285	7/8"-14 UNF	10	2	9	5,5
ET3-340	20	90	340	460	175	430	1 1/4"-12 UNF	14	2	8	18
ET3-495	30	140	495	660	235	610	1 3/4"-12 UNF	20	2	12	45



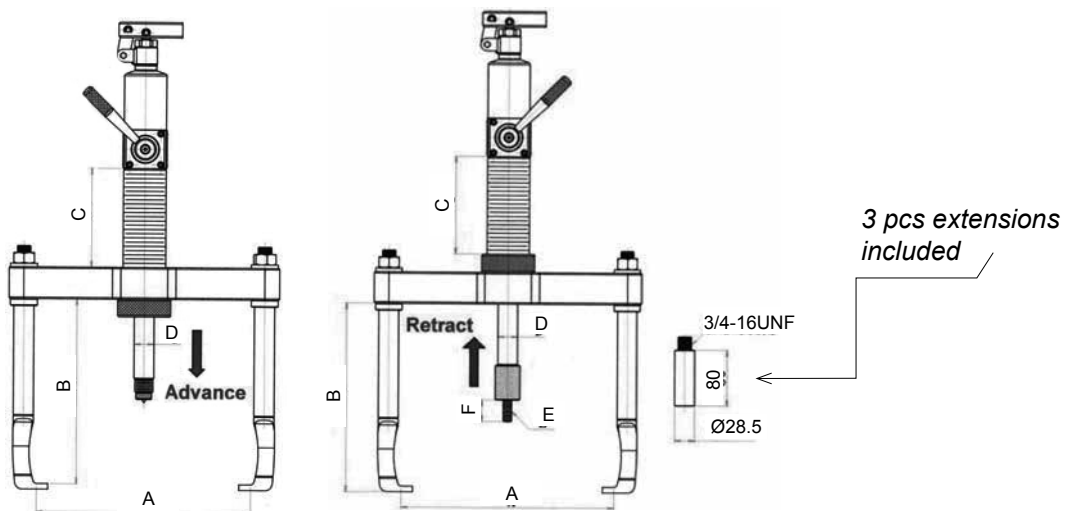
PUSH PULLER / THREE IN ONE

- For pressing an externally mounted bearings.
- To pull off an externally mounted bearings.
- To pull an internally mounted bearings.
- Double-acting hydraulics.
- Capacity: 12 ton of exterior features.
- With built-in swivel hand pump, 360°.

**CAPACITY:
12 TON**



Part No	Function	Capacity (ton)	A (mm)	B (mm)	C (mm)	D (mm)	E (mm)	F (mm)	Weight (kg)
PD12080	Outside pushing	8	44-280	270	140	28	M12-P1.75	30	17,5
	Outside pulling	12	85-300	260	140	28	-	-	
	Inner pulling	8	110-210	130-150	-	-	1"-12UNF	-	



PULLER, 50-150 TON

Momento also offers big puller with capacities of 50, 100 and 150 ton. Pullers are mounted on a frame with wheels which makes them easy to roll up to the object being pulled loose. For adjusting the height and angle are wagons fitted with hydraulic cylinders and set screws.

CONTACT US
FOR MORE
INFORMATION



Puller with 100 ton capacity. Even the tips, in front of the arms of deduction, can be adjusted in order to get the best possible grip.



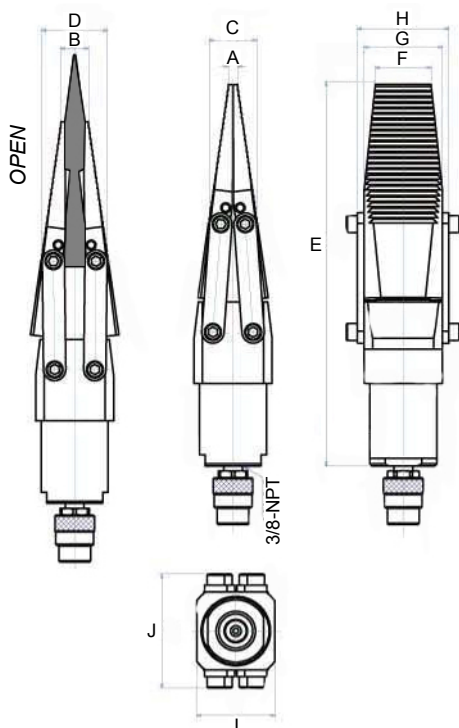
SPREADING WEDGES - SR OCH TL

- Narrow lace makes it possible to access in areas where normal spreader or lifting tools do not fit.
- Large capacity.
- Two types of grooves on the tips. See picture SR & TL.
- Powered by a separate hand pump (700 bar).

**HAND PUMP
PAGE 4**



Part No	Capacity (ton)	A Spread Min (mm)	B Spread Max (mm)	C (mm)	D (mm)	E (mm)	F (mm)	G (mm)	H (mm)	I (mm)	J (mm)	Weight (kg)
SR 07	15	6	16	36	46	232	31	45	55	63	63	3,3
TL 07	15	6	16	36	46	232	31	45	55	63	63	3,3
SR 15	25	8	25	43	59	342	50	70	82	70	102	7,8



LIFTING WEDGE - HLW18

- Parallel lift, without turning or angle change.
- 18 ton lifting capacity.
- 20 mm lifting movement.
- Included support pad makes it easy to take retakes and to secure the load.
- Steps shape enables multiple lifting points.
- An extra lift heel increases the possibilities.
- Available with built-in pump (TC) or with quick connector for connection to external pump (T).



Part No	Min height (mm)	Lifting stroke (mm)	Max height (mm)	Width (mm)	Length (mm)	Weight (kg)
HLW18T	10	20	50/67	66	340	8,5
HLW 18TC	10	20	50/67	66	530	12

Support blocks and lifting heel is included in both models.



NUTSPLITTER - HNS

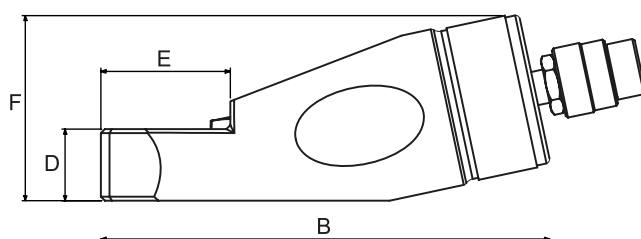
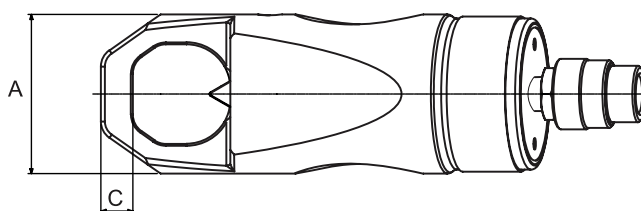
- Compact design.
- Angled head provides a good accessibility.
- 5 different sizes. From nut size 19-60 mm.
- Interchangeable cutting blades.



Part No	Nut range (mm)	Bolt range	Capacity (ton)	Oil capacity (cm ³)	A (mm)	B (mm)	C (mm)	D (mm)	E (mm)	F (mm)	Weight (kg)
HNS 1924	19-24	M12-M16	10	20	60	167	10	25	40	68	2,1
HNS 2432	24-32	M16-M22	15	60	70	178	13	30	52	76	3,1
HNS 3241	32-41	M22-M27	20	80	80	225	15	36	65	93	4,2
HNS 4150	41-50	M27-M33	35	155	95	244	21	45	76	106	8,0
HNS 5060	50-60	M33-M39	50	240	106	269	24	55	92	125	11,5

Accessories, spare cuts

	Part No
HNS 1924	E2780
HNS 2432	E2784
HNS 3241	E2788
HNS 4150	E2792
HNS 5060	E2796



HAND PUMP
PAGE 4-5



MECHANICAL FLANGE SPREADER - MFS 7T

- Simple and durable construction.
- Can handle flange gap of only 2 mm.
- Reversible arms for wide or narrow flanges.
- Comes in a handy storage bag.

CAPACITY:
68 kN (6,8 tons)

To avoid breaking the flange, we recommend 2 spreader used with 180° spacing on the flange.



Part No	Capacity (ton/kN)		Capacity/pair (ton/kN)		Spread (mm)	Weight (kg)
MFS 7T	6,8	68	13,6	136	2-27mm	5



For wide flanges. Max 155 mm. Ø 19,8mm.



For narrow flanges. Max 90 mm. Ø 15,4 mm.

POWER TOOL KIT, 10 TON

TE 910 H:

Comes with 2-stage hand pump.

TE 910 P:

Comes with air operated pump

- Several different print heads and bucks heels.
- 4 different extension offers many combination possibilities.
- Working range: 55-1790 mm.
- Can be supplemented with more cylinders and tools.

Position	Part No	Description
01 A	AHP 702 SG	Hand pump complete
01 B	AP 921 SG	Air operated pump complete (next page)
02	RA106B	Cylinder, 10 ton, 152 mm stroke
03	SR05E	Wedge capacity: 500kg, min: 17mm, max: 91mm
04	F0174	Support plate, 150x97mm
05	F0178	Tensioning lug of cylinder tube
06	F0177	Tensioning lug of plunger
07	B0522	Extension tube, 127mm
08	B0521	Extension tube, 254mm
09	B0520	Extension tube, 355mm
10	B0519	Extension tube, 482mm
11	B0406	Coupling pin, D=33mm, 2x45mm
12	F0176	Pressure head, pointed
13	F0175	pressure head, 90° V-shape
14	F0173	Pressure head, grooved
15	B0083	Pressure ball, rubber surface, Ø 75mm
16	TE900	Storage box, sheet metal, 77x36x21cm

**TOTAL WEIGHT:
APPROX. 40 KG**



SERVICE AND MAINTENANCE

The various accessories provides a wealth of possibilities for how the force from the cylinder can be used! The kits are delivered in sturdy steel box with room for additional equipment. For example: Low-profile cylinder (page 12), hollow cylinder (page 14), spreading wedges (page 24).

When using the tightening lugs reduced capacity (50%, 350 bar), due to shifting of the load from the center of the cylinder. When using the extension capacity drops due to buckling risk. Instructions are included.

01 B



16



HOSES AND COUPLERS, 700 BAR

For our standard range of pumps, valves and other tools.

- Hoses have 4-fold safety against break.
- Optional hose lengths can be ordered.
- Quick couplings are optional.



TE604 och TE400



10 115 6454 och 10 115 1404

Screw couplers

Part No	Thread	Type	Information
TE604	int. 3/8" NPT	Male	Used on hose
TE400	ext. 3/8" NPT	Female	Used on cylinder/tool

Quick couplers (optional)

Part No	Thread	Type	Information
10 115 6454	ext. 3/8" NPT	Male	Used on cylinder/tool
10 115 1404	int. 3/8" NPT	Female	Used on hose

Hoses

Part No	Connection (ext. x2)	Length (m)	Min. Bending radius (mm)
TE7100	3/8" NPT	1	70
TE7200	3/8" NPT	2	70
TE7300	3/8" NPT	3	70
TE7500	3/8" NPT	5	70



Screw coupling: TE604



Complete hand pump with pressure gauge, hose (2 m) och coupling (TE604).

HOSES AND COUPLERS, 1500 BAR

For special tools

- The connection of our hoses and couplers 1500 bar sealed with a cone to withstand high pressure.
- See the pictures which adapters to be used for connecting the links to the pump and to gauge bracket.



Quick couplers

Part No	Thread	Type	Information
10 116 6202	int. G 1/4"	Male	-
10 116 1202	int. G 1/4"	Female	-
10 116 1222	int. G 1/4"	Female	with locking ring
10 116 1250	int. G 1/4"	Female	90° swiveling

Hoses

Part No	Connection (utv. x2)	Length (m)	Min. Bending radius (mm)
TE18200	G 1/4"	2	130
TE18200S *	G 1/4"	2	130
TE18300	G 1/4"	3	130
TE18300S *	G 1/4"	3	130

Adapter

Part No	A	B
19 950 1601	G 1/4"	G 1/4"
19 950 1611	3/8" NPT	G 1/4"

Gauge and bracket

Part No	Information
19 940 3122	Gauge 0-2000 bar
19 950 1681	Bracket

* equipped with extra protection tube.



ACCESSORIES CYLINDERS - NSSS

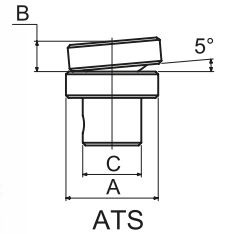
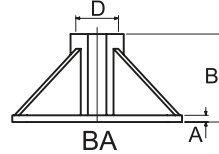
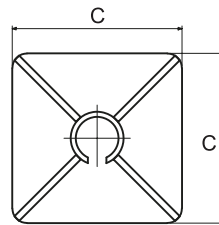
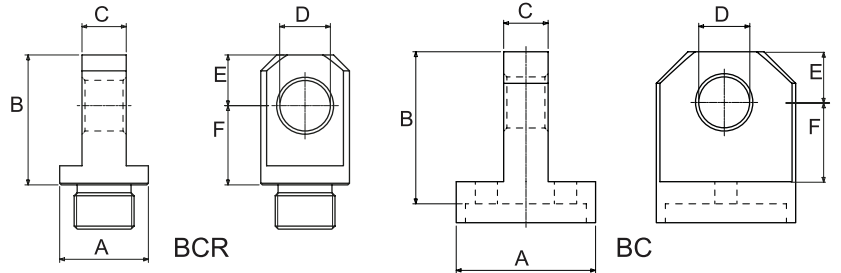


Clevis eye plunger	Cylinder	A Ø (mm)	B (mm)	C (mm)	D Ø (mm)	E (mm)	F (mm)
BCR 5	NSSS5x	28	41	14	16	15	25
BCR 10	NSSS10x	43	59	25	22,3	25	34
BCR 15	NSSS15x	43	62	25	22,3	25	37
BCR 25	NSSS25x	57	74	38	31,8	31	43

Clevis eye cylinder	Cylinder	A Ø (mm)	B (mm)	C (mm)	D Ø (mm)	E (mm)	F (mm)
BC 5	NSSS5x	44	48	14	16	16	25
BC 10	NSSS10x	63	67	25	22,3	25	35
BC 15	NSSS15x	76	67	25	22,3	25	35
BC 25	NSSS25x	95	79	38	31,8	31	41

Support plate	Cylinder	A (mm)	B (mm)	C (mm)	D Ø (mm)
BA 10	NSSS102-1014	9	110	230	58
BA 25	NSSS252-2514	16	126	280	89

Tilt saddle	Cylinder	A Ø (mm)	B (mm)	C Ø (mm)
ATS 10	NSSS102-1014	35	11,5	22
ATS 25	NSSS251-2514	50	14	36

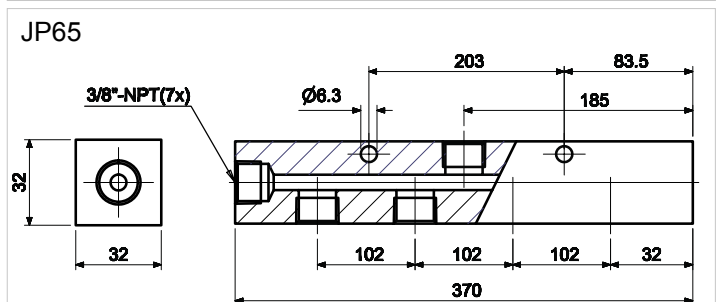
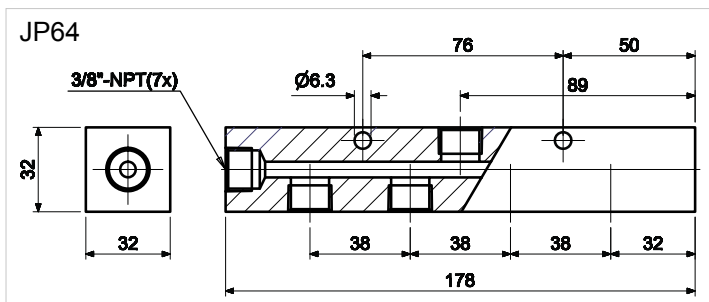
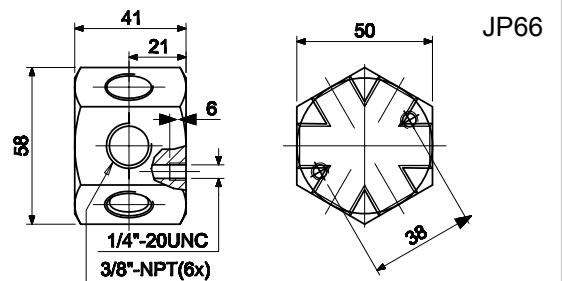


MANIFOLDS

Provides the ability to connect multiple cylinders or tools.



Part No	Description
JP64	7 female ports - 178 mm long
JP65	7 female ports - 369 mm long
JP66	6-port hexagon type

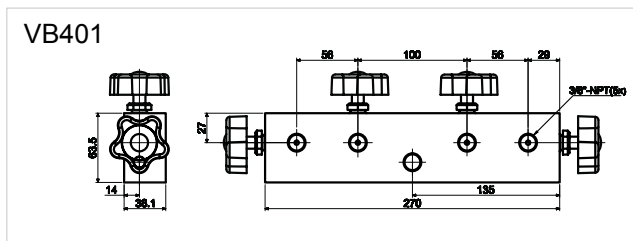
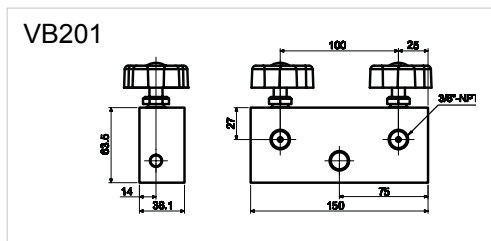


MANIFOLDS WITH SHUT-OFF VALVES

- For increased control over the loads in your hydraulic system.
- The manifolds have one input port and 2 or 4 pieces of output shut-off valve.



Part No	Description
VB201	Int. 3/8"-NPT, shut-off x 2
VB401	Int. 3/8"-NPT, shut-off x 4



SHUT-OFF VALVES

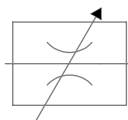
For increased control over the loads in your hydraulic systems. The valves are available in three different versions.

Part No	Description
VB101	Single shut-off valve
VC331	Shut-off valve with check valve
VB66	Shut-off check valve and overflow valve

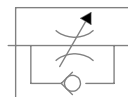


VC331, VB66, VB101

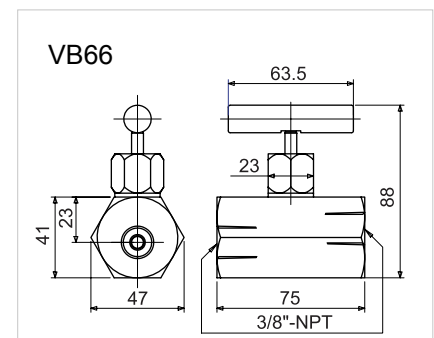
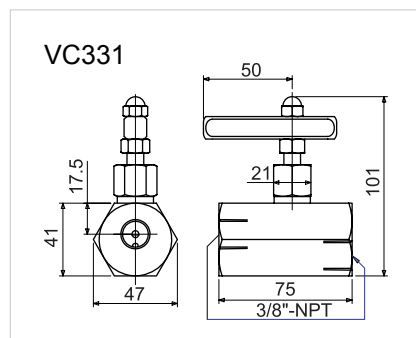
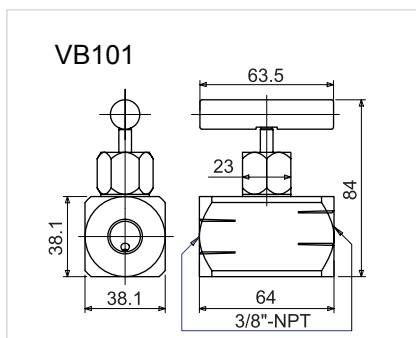
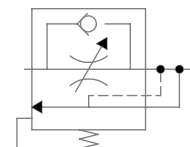
Flow chart
VB101



Flow chart
VC331



Flow chart
VB66



GAUGE AND FITTINGS

Our gauges are liquid filled for longer life. For mounting on the pump or separate use with quick couplings.



M0031-S pressure gauge mounted in a bracket with couplings. Can be connected between the hose and tool if necessary.



CP 210 coupling for pressure gauge - gaugebracket. Allows you to remove the gauge from the bracket. Reduces the risk for damage if such transportation. Thread: 1/4" NPT.



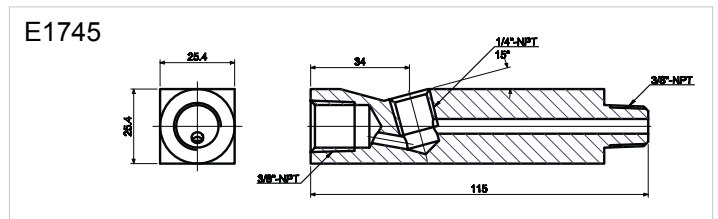
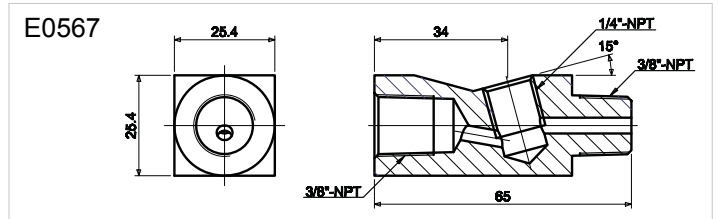
E0567



E1745

Fittings

Part No	Description
E0567	Length: 65 mm, 3/8 NPT - both
E1745	Length: 115 mm, 3/8 NPT - both



Gauge (accuracy class 1,6)

Part No	Diameter (mm)	Scale		Connection	Protection
		(bar)	(psi)		
M0031	65	0-700/10000	0-10000/15000	1/4" NPT	G0584
M0136	100				-

Gauge kits

M0031-S Connection via quick couplers
Consists: M0031, G0584, E0567, TE400, TE604

AHP-G Mounting on hand pump, AHP
Consists: M0031, G0584, E0567, CP210

AP-G Mounting on air operated pump
AP1600S och AP3000S
Consists: M0031, G0584, E1745, CP210



Gauge M0031
Rubber cover G0584



Gauge M0136

ADAPTERS, 700 BAR

For transitions to other threads - Contact Us!

ADO303



ADI303

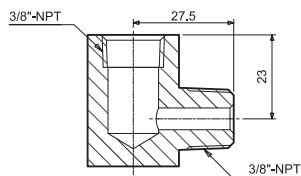


ADG303

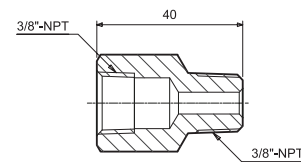


ADT303

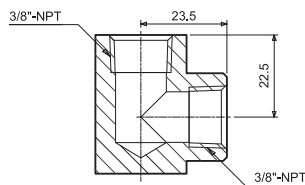
ADL303
90° angle



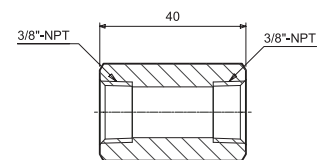
ADF303
Adapter
INT-EXT



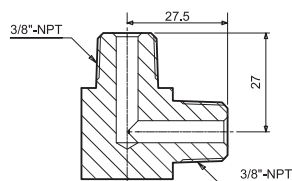
ADC303
90° angle



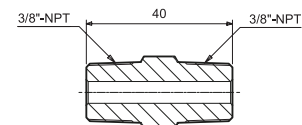
ADI303
Adapter
INT-INT



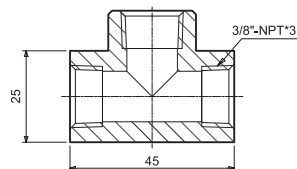
ADE303
90° angle



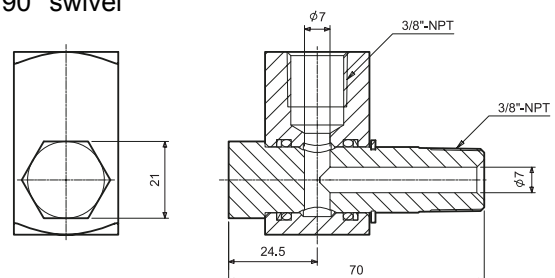
ADO303
Adapter
EXT-EXT



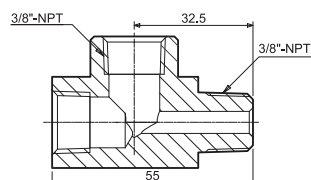
ADT303
T-connection



BG9705
90° swivel



ADG303
T-connection



SAFETY

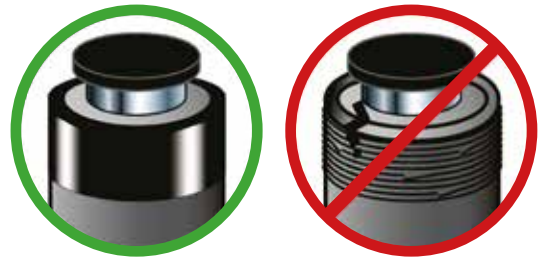
01. CHOOSE THE RIGHT CYLINDER

You must know the weight of what you intend to lift and choose a cylinder with at least 20% more capacity. Be aware of possible load shift requiring more capacity at any particular lifting point.



02. CONTROL

Check each component before you set up your hydraulic system. Make sure all components are capable of the hydraulic pressure from the pump. Do not use damaged or worn components.



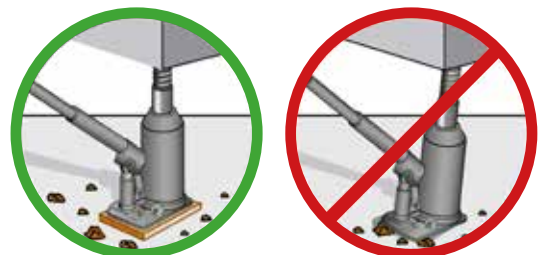
03. SAFETY INSTRUCTIONS

Read all warning labels and instructions. Operating instructions must be understood before using equipment. Never remove the labels from equipment. Replace missing, worn or damaged labels. Always wear safety goggles and protective clothing when working with hydraulic equipment.



04. EACH JACK OR CYLINDER MUST BE FULLY SUPPORTED AT THE BASE

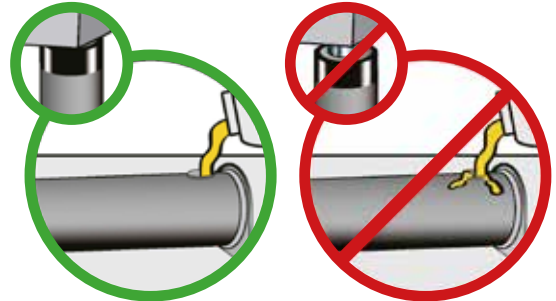
Every jack or cylinder, whether used individually or in a system, should be completely supported on a solid, firm non-sliding foundation capable of supporting the load.



SAFETY

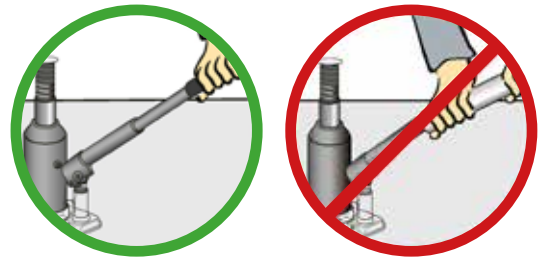
05. FILL OIL RESERVOIRS WITH CYLINDER RETRACTED

Only fill pump to recommended level, and fill only when connected cylinder is fully retracted.



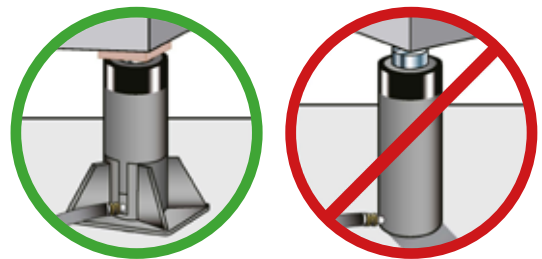
06. KNOW HOW YOUR HYDRAULICS WORK

Do not use extensions or cheater bars on hydraulic cylinders or hand pumps to raise a load.



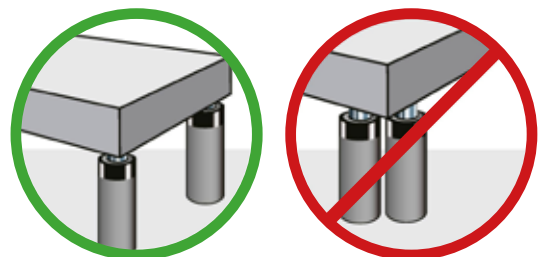
07. CENTER THE LOAD

The load must be centered on the cylinder, or equally distributed on multiple cylinders. Off center loading can result in the cylinder slipping out and loss of the load.



08. WHEN USING MULTIPLE CYLINDERS, DISTRIBUTE LOAD EVENLY

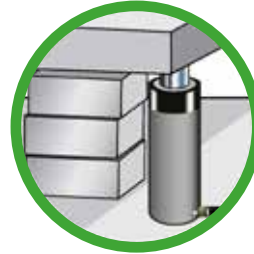
When lifting with multiple cylinders you must be able to control the flow and push to all lifting points. This can be done with distribution valves and check valves or multi-port pump and pressure gauge to each cylinder.



SAFETY

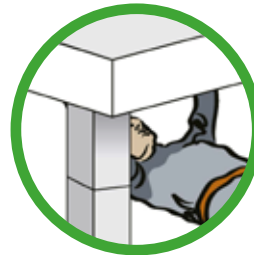
09. SECURE THE LOAD WHEN LIFTING

Place blocking under the loads as you raise it. Each time you raise it higher, insert more blocking. Position yourself that will keep you clear of the load, and will not allow your hands or other body parts between the load and the blocking.



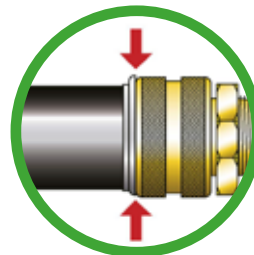
10. DO NOT USE CYLINDERS AS PERMANENT SUPPORTS

Hydraulic cylinders are not meant to be used as permanent supports. If you need to hold the load for any length of time, support blocks or cylinders with mechanical lock should be used.



11. HYDRAULIC COUPLERS

When making connections with quick couplers, make sure the couplings are fully engaged. Check that there is no leakage. Use hand force only.



12. AVOID EXTREME HEAT OR WELD SPLATTER. MAX 65°C

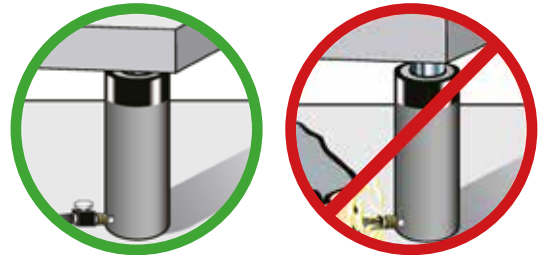
Weld splatter will damage piston rods and hydraulic hoses. Hydraulic oil can ignite if vaporized or exposed to high temperatures.



SAFETY

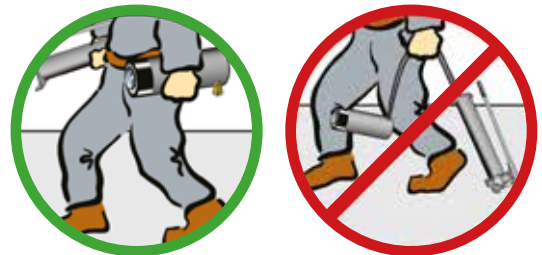
13. HYDRAULIC DISCONNECTIONS

Never attempt to disconnect hydraulic hoses, fittings or couplers under pressure. Unload the cylinder, open the release screw on the hand pump and shift or open all hydraulic control valves. If system includes a gauge, double check the gauge to insure pressure has been completely released.



14. DO NOT CARRY OR DRAG PUMPS AND CYLINDERS BY THEIR HOSES

Dragging or carrying cylinders or pumps by a connected hose can damage the couplers and hoses. Using damaged couplers and hoses can be dangerous and cause serious injuries.



15. KEEP HYDRAULIC HOSES FREE OF SHARP BENDS AND EDGES

Do not drop sharp or heavy objects on hose. Keep hose out of heavy traffic areas. Do not bend hose more than specifications. This will cause internal damage. Applying pressure to a damaged hose may cause it to rupture. And cause extremely serious injuries.



When used correctly hydraulics is one of the safest methods of applying large forces in your work. When in doubt contact us for advice.

WORLDWIDE PRESENCE



EST. IN SWEDEN 1951 / www.momento.se

MOMENTO
Box 14
642 21 Flen
Sverige

VISITING ADDRESS
Kungsvägen 68
642 34 Flen
Sverige

CONTACT
0157-690 00
info@momento.se
www.momento.se

